

 **Head Office**

No 50, Kiepersol Crescent, Atlas Gardens,  
Contermanskloof, Durbanville, 7550,  
Cape Town, South Africa  
Tel: +27 21 557 7257  
Fax: +27 21 557 7381  
Email: info@leatt.com

 **USA**

26475 Summit Circle,  
Santa Clarita, California, 91350  
Tel: 661 287 9258  
Toll Free: 1 800 691 3314  
Fax: 661 287 9688

**Questions:** info@leatt.com  
**Sponsorships:** ridersupport@leatt.com  
**Warranty:** info@leatt.com  
**Dealer Enquiries (US):** info@leatt.com

 **Europe**

Email: leatt-eu-contact@leatt.com



# LEATT®

## 2015

PHOTO: FRYAN SWANBERG



Find us online at  
[www.leatt.com](http://www.leatt.com)  
Also available on Facebook, Twitter & Instagram

NOTE: THE PRODUCTS DEPICTED IN THIS BROCHURE MAY VARY TO SOME DEGREE IN PRODUCT GRAPHICS OR COLOR.





PHOTO: RYAN SWANBERG

RYAN SIPES

# INDEX

## HELMETS

- 3 Helmet info
- 7 GPX Helmets

## NECK BRACE

- 11 Neck Brace info
- 13 GPX 6.5
- 14 GPX 5.5
- 15 GPX 5.5 JR
- 16 GPX 4.5
- 17 STX RR
- 18 STX
- 19 SNX Trophy
- 20 SNX Pilot
- 21 Accessories

## KNEE BRACE

- 23 Knee brace info
- 26 C-Frame

## ADULT TORSO PROTECTION

- 27 Protection info
- 29 Fusion 3.0
- 30 Fusion 2.0
- 31 5.5 Body Protector
- 32 5.5 Body Vest
- 33 Airfit Lite Body Protector
- 34 Airfit Body Protector
- 35 Airfit Lite Body Vest
- 36 Airfit Body Vest
- 36 3DF Back Protector
- 37 5.5 Pro HD Chest Protector
- 38 5.5 Pro Chest Protector
- 38 5.5 Pro Lite Chest Protector
- 39 4.5 Chest Protector
- 40 Adventure Chest Protector
- 41 Chest Protector Lite
- 42 Chest Protector Lite SHOX

## JUNIOR TORSO PROTECTION

- 43 5.5 Body Protector JR
- 44 3DF Body Protector JR
- 45 5.5 Pro HD Chest Protector JR
- 46 5.5 Pro Chest Protector JR
- 47 Chest Protector Pro JR
- 48 Chest Protector Adventure JR

## KNEE GUARDS

- 49 Airflex Knee
- 50 3DF Hybrid EXT
- 51 3DF Hybrid Enduro
- 52 3DF Knee
- 53 Dual Axis
- 54 Knee EXT
- 55 Knee Enduro

## ELBOW GUARDS

- 56 Airflex Elbow
- 57 3DF Hybrid
- 58 3DF Elbow
- 59 Contour
- 60 Hardshell

## SHOULDER BRACE

- 61 Shoulder Brace

## FIRST LAYER

- 62 Roost Vest

## HYDRATION

- 63 4.5 Hydra Chest Protector
- 63 F4 3L
- 64 A4 3L
- 64 H4 2.5L
- 65 A3 2L
- 65 H3 1.2L
- 66 A2 3L
- 66 H2 & H2 HHF 2.5L
- 67 SPX 0.5L
- 67 SP 1 0.5L
- 67 H1 0.5L
- 68 Parts & Accessories

## GLOVES

- 69 Glove Info
- 71 Airflex Lite
- 72 Airflex Wind

## COOLING

- 73 Cooling Info
- 75 Pre-Cool Vest
- 76 Coolit Vest & Tee

## JACKETS

- 77 W.E.C.

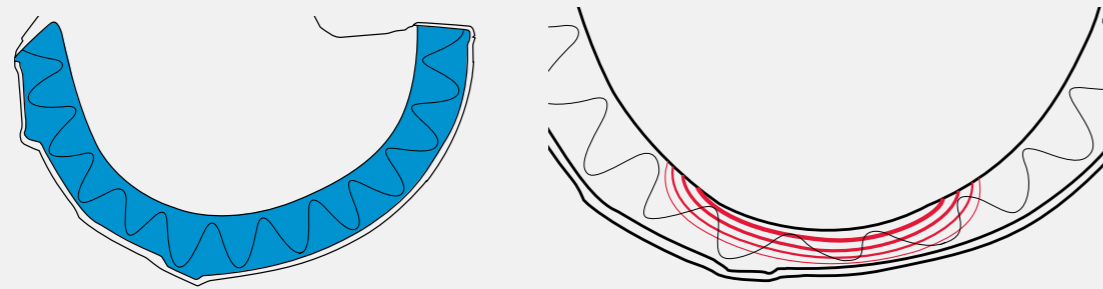
## EXTRAS

- 78 Casuals
- 78 Tool Bag
- 78 Brace Bag
- 78 Weather Collar
- 79 Spare Parts
- 81 Sizing Charts

VISIT [WWW.LEATT.COM](http://WWW.LEATT.COM) FOR MORE PRODUCTS AND INFORMATION



**V-FOAM** LEATT® 3D IN-MOLDED V-FOAM IS A MULTI-DENSITY IMPACT FOAM FOR MEDIUM AND HIGH ENERGY IMPACTS.



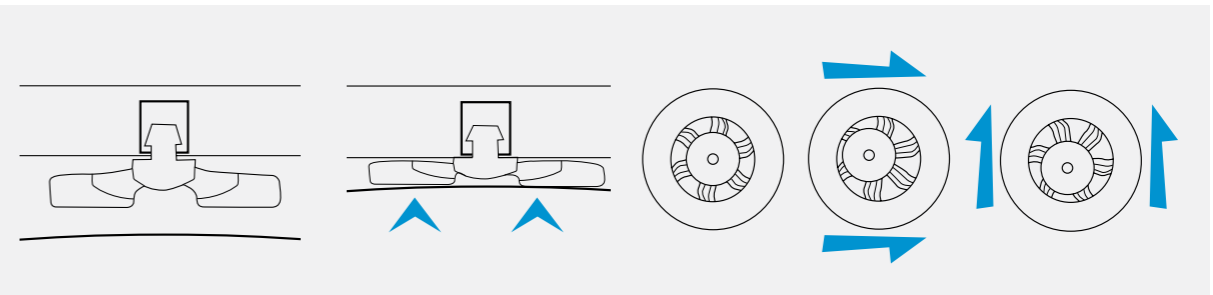
IN-MOLDED 3D V-FOAM

COMPRESS AND DEFORM

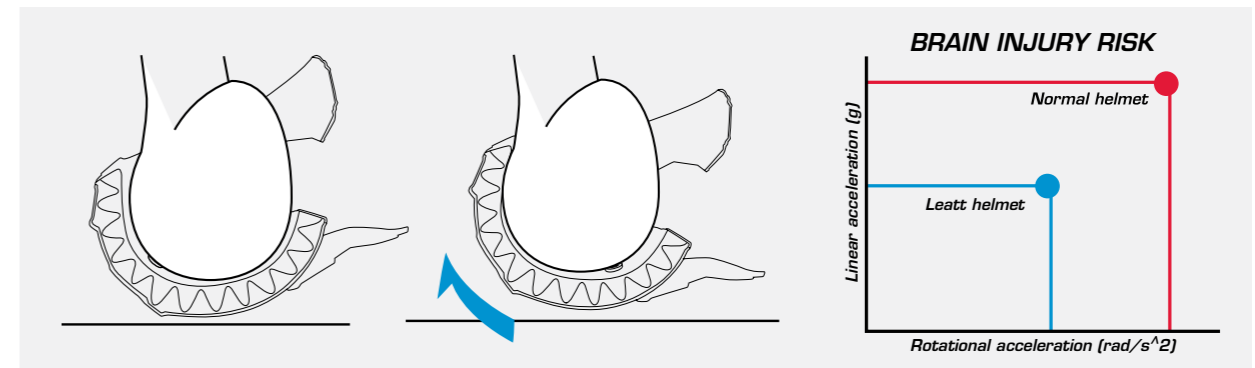
Leatt® 3D in-molded V-Foam is a multi-density impact foam for medium and high energy impacts. The V structure deforms and compresses, absorbing the force as well as reducing the g-forces transferred to the head. This in-molded technology creates a strong structure and allows for improved energy absorption as well as a smaller shell size due to the elimination of the air gap between shell and impact foam.

**360° TURBINE TECHNOLOGY**

HELPS REDUCE LOW ENERGY IMPACTS BY 30% - 50% AND ROTATIONAL ACCELERATION BY 20%



TURBINES DEFORM TO ABSORB IMPACT



TO PROVIDE HEAD MOVEMENT IN THE HELMET AND TO REDUCE ROTATIONAL ACCELERATION

Leatt® 360° Turbine Technology improves energy impact absorption at concussion level and improves protection against multiple impacts. Initial Lab testing show a 30%-50% reduction in energy transfer to the head at concussion level. The turbine design allows movement of the outer shell during impact, limiting the rotational forces to the skull and brain by up to 20%.

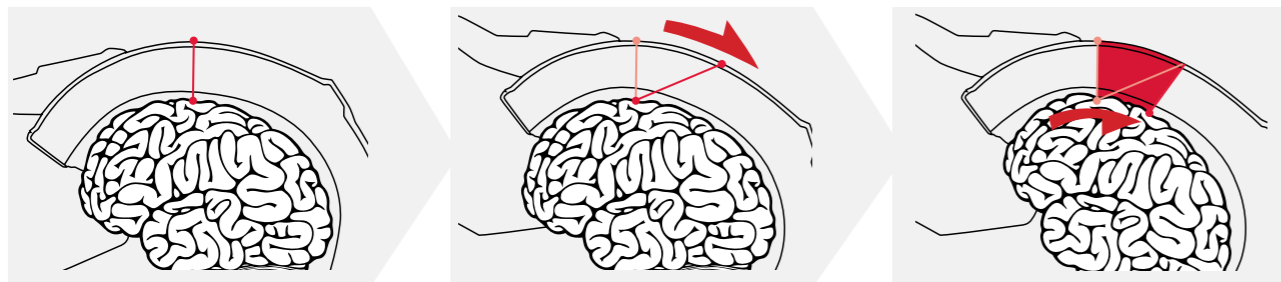
# REDUCED OUTER SHELL VOLUME

HELPS REDUCE MOMENTUM AND ROTATION TO THE HEAD AND BRAIN AS WELL AS TRANSFERRED NECK FORCES

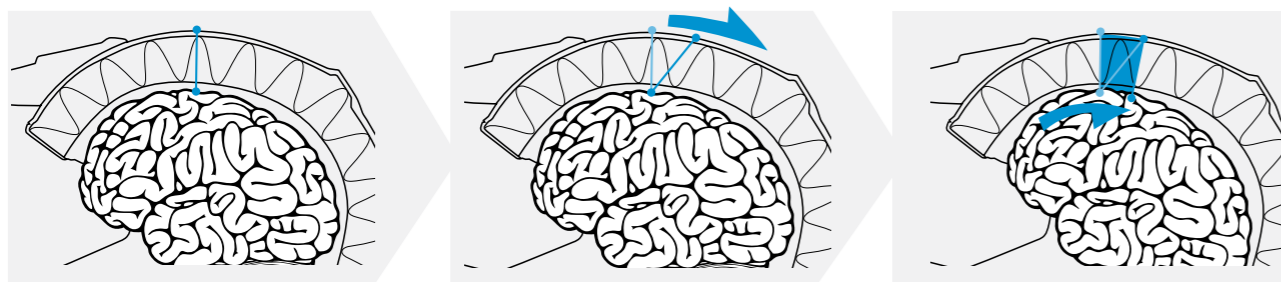


Shell size, neck forces and rotational brain acceleration go hand in hand. A 20% smaller outer shell can reduce the momentum and the rotational energy to the head, brain and neck by up to 40%

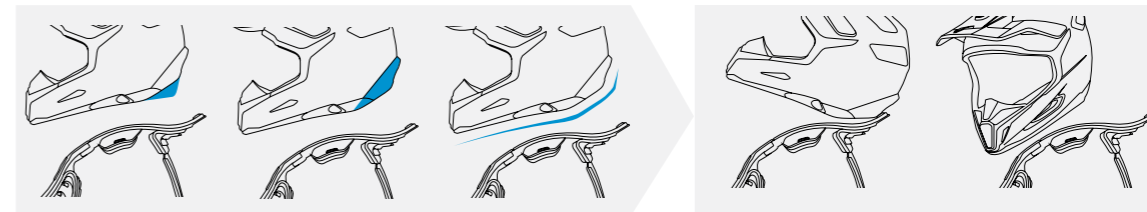
## RELATIVE BRAIN TO SKULL MOVEMENT WITH A LARGE HELMET DURING IMPACT



## RELATIVE BRAIN TO SKULL MOVEMENT WITH A LEATT® HELMET DURING IMPACT



# NECK BRACE COMPATIBILITY



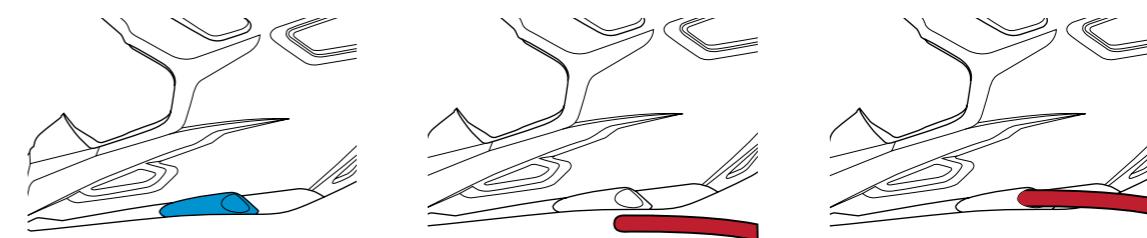
The helmet features an optimised rear cut for correct clearance, a rear hyperextension impact platform and unique helmet rim contour to match our neck braces. These special features offer perfect compatibility with Leatt® neck braces or without.

# MAXIMUM VENTILATION



Our helmets have maximum ventilation that has been optimized for Motocross, Off-road, Downhill MTB and BMX racing. The ventilation is not dependent on the speed of travel, and is effective even at low speeds.

# HYDRATION READY



Staying hydrated to optimize physical and mental performance is a given for any champion. Our helmets are race ready with a prepared fitting for your hydration system. Optional internal Hydration Hands free kit available



# GPX HELMET

## Quattro Force Control

- Carbon or Composite matrix shell ECE + DOT(3 sizes)
- 3D in-molded multi density V-Foam
- 360° TURBINE multiple low energy impact
- 360° TURBINE rotational acceleration

## Reduced outer shell volume for reduction in:

- Neck forces
- Rotational brain acceleration

## Optimized integration with Leatt® neck braces

- 360° helmet and neck brace match
- Rear clearance cut for optimal head range of movement
- Rear hyperextension impact platform

## Optimized weight. Very light with premium safety

## Maximum ventilation

- Over 190 honeycomb vent holes
- 11 large vent ports

## Hydration ready. Optional internal hands-free kit available

## Low friction cheek pads for emergency removal (patent pending)

## Moisture-wicking, breathable and anti-microbial snap-out liner

## Visor with break away function

## Certified and tested: ECE2205/DOT, ACU Gold, AS/NZS 1698-2006



GPX 6.5 BLACK/RED



GPX 6.5 V1 BLACK/WHITE



GPX 6.5 V2 JUNIOR ORANGE/BLACK



GPX 6.5 V2 JUNIOR YELLOW/BLACK

## GPX 6.5 V1 Carbon

SIZE	BLACK/RED	BLACK/WHITE
<b>XS</b> 53 - 54 CM	1015500030	1015500040
<b>S</b> 55 - 56 CM	1015500031	1015500041
<b>M</b> 57 - 58 CM	1015500032	1015500042
<b>L</b> 59-60 CM	1015500033	1015500043
<b>XL</b> 61-62 CM	1015500034	1015500044
<b>XXL</b> 63-64 CM	1015500035	1015500045

SPARE PARTS ON [WWW.LEATT.COM](http://WWW.LEATT.COM)

## GPX 6.5 V2 Junior Carbon

SIZE	YELLOW/BLACK	ORANGE/BLACK
<b>XS</b> 53 - 54 CM	1015500020	1015500010
<b>S</b> 55 - 56 CM	1015500021	1015500011

SPARE PARTS ON [WWW.LEATT.COM](http://WWW.LEATT.COM)







GPX 5.5 GHOST SATIN BLACK



GPX 5.5 WHITE



GPX 5.5 V3 RED



GPX 5.5 V5 WHITE



GPX 5.5 V3 GREEN



GPX 5.5 V5 ORANGE



GPX 5.5 V5 RED



GPX 5.5 V6 JUNIOR RED



GPX 5.5 V4 GREEN



GPX 5.5 V4 RED



GPX 5.5 V7 JUNIOR WHITE

**GPX 5.5**

SIZE	GHOST SATIN BLACK	SOLID WHITE	SOLID BLACK
<b>XS</b> 53 - 54 CM	1015500260	1015500080	1015500080
<b>S</b> 55 - 56 CM	1015500261	1015500081	1015500081
<b>M</b> 57 - 58 CM	1015500262	1015500082	1015500082
<b>L</b> 59-60 CM	1015500263	1015500083	1015500083
<b>XL</b> 61-62 CM	1015500264	1015500084	1015500084
<b>XXL</b> 63-64 CM	1015500265	1015500085	1015500085

SPARE PARTS ON WWW.LEATT.COM

**GPX 5.5 JNR**

SIZE	WHITE
<b>XS</b> 53 - 54 CM	1015500050
<b>S</b> 55 - 56 CM	1015500051

SPARE PARTS ON WWW.LEATT.COM

**GPX 5.5 V5**

SIZE	WHITE	ORANGE	RED
<b>XS</b> 53 - 54 CM	1015500110	1015500100	1015500120
<b>S</b> 55 - 56 CM	1015500111	1015500101	1015500121
<b>M</b> 57 - 58 CM	1015500112	1015500102	1015500122
<b>L</b> 59-60 CM	1015500113	1015500103	1015500123
<b>XL</b> 61-62 CM	1015500114	1015500104	1015500124
<b>XXL</b> 63-64 CM	1015500115	1015500105	1015500125

SPARE PARTS ON WWW.LEATT.COM

**GPX 5.5 V4**

SIZE	GREEN	RED
<b>XS</b> 53 - 54 CM	1015500140	1015500130
<b>S</b> 55 - 56 CM	1015500141	1015500131
<b>M</b> 57 - 58 CM	1015500142	1015500132
<b>L</b> 59-60 CM	1015500143	1015500133
<b>XL</b> 61-62 CM	1015500144	1015500134
<b>XXL</b> 63-64 CM	1015500145	1015500135

SPARE PARTS ON WWW.LEATT.COM

**GPX 5.5 V3**

SIZE	RED	GREEN
<b>XS</b> 53 - 54 CM	1015500150	1015500160
<b>S</b> 55 - 56 CM	1015500151	1015500161
<b>M</b> 57 - 58 CM	1015500152	1015500162
<b>L</b> 59-60 CM	1015500153	1015500163
<b>XL</b> 61-62 CM	1015500154	1015500164
<b>XXL</b> 63-64 CM	1015500155	1015500165

SPARE PARTS ON WWW.LEATT.COM

**GPX 5.5 V6 Junior**

SIZE	RED
<b>XS</b> 53 - 54 CM	1015500060
<b>S</b> 55 - 56 CM	1015500061

SPARE PARTS ON WWW.LEATT.COM

**GPX 5.5 V7 Junior**

SIZE	WHITE
<b>XS</b> 53 - 54 CM	1015500070
<b>S</b> 55 - 56 CM	1015500071

SPARE PARTS ON WWW.LEATT.COM



# NECK BRACE TECHNOLOGY

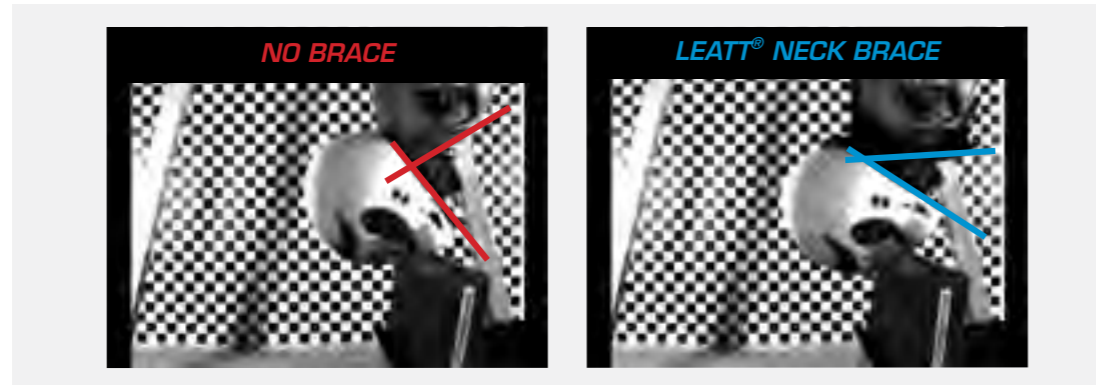
Until about 1935, motorcyclists didn't wear helmets – with tragic consequences. Seat belts in cars? It seems strange now, but they only became mandatory for the first time in 1970. Likewise, the neck brace is the most recent safety innovation that will hopefully become simple common sense. Leatt-Brace®'s are lab-designed to fit most riders: young or old, amateur or professional, but most importantly, they're built and tested to help lessen the risk of injury when riding. It's just that simple.

The Leatt® Lab, based in Cape Town, South Africa, is Leatt®'s home of research & development. Here Dr. Leatt and his team of engineers and designers conceptualize and test new products and constantly strive to improve existing products even further. The facility features state-of-the-art testing and prototyping equipment that enables the team to take a product from conceptualization, through testing, all the way to pre-production prototypes. While the majority of Leatt®'s R&D gets done at the Cape Town facility, collaborations with global partners give our products an international flavor.

## COMPUTER SIMULATED TESTS



## ACTUAL RIG TEST TESTS

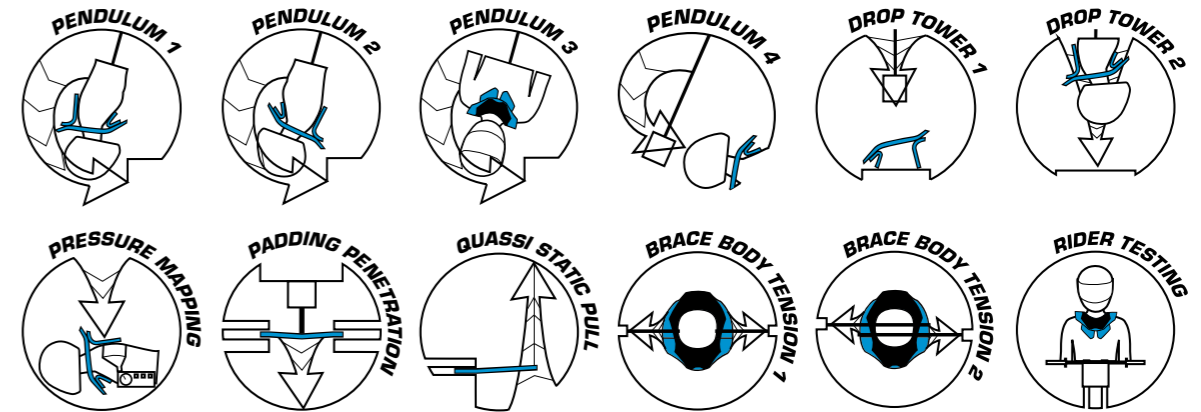


The philosophy of testing at Leatt® has been to develop test rigs and methods that allow comprehensive in-house testing and exploration of product performance. Using a range of real life scenarios similar to the types of situations that might be encountered in the appropriate form of racing or other accident, tests are conducted at intensity levels that allow Leatt® engineers to fully understand and characterize accident dynamics and product / rider interaction, in order to optimize product performance.

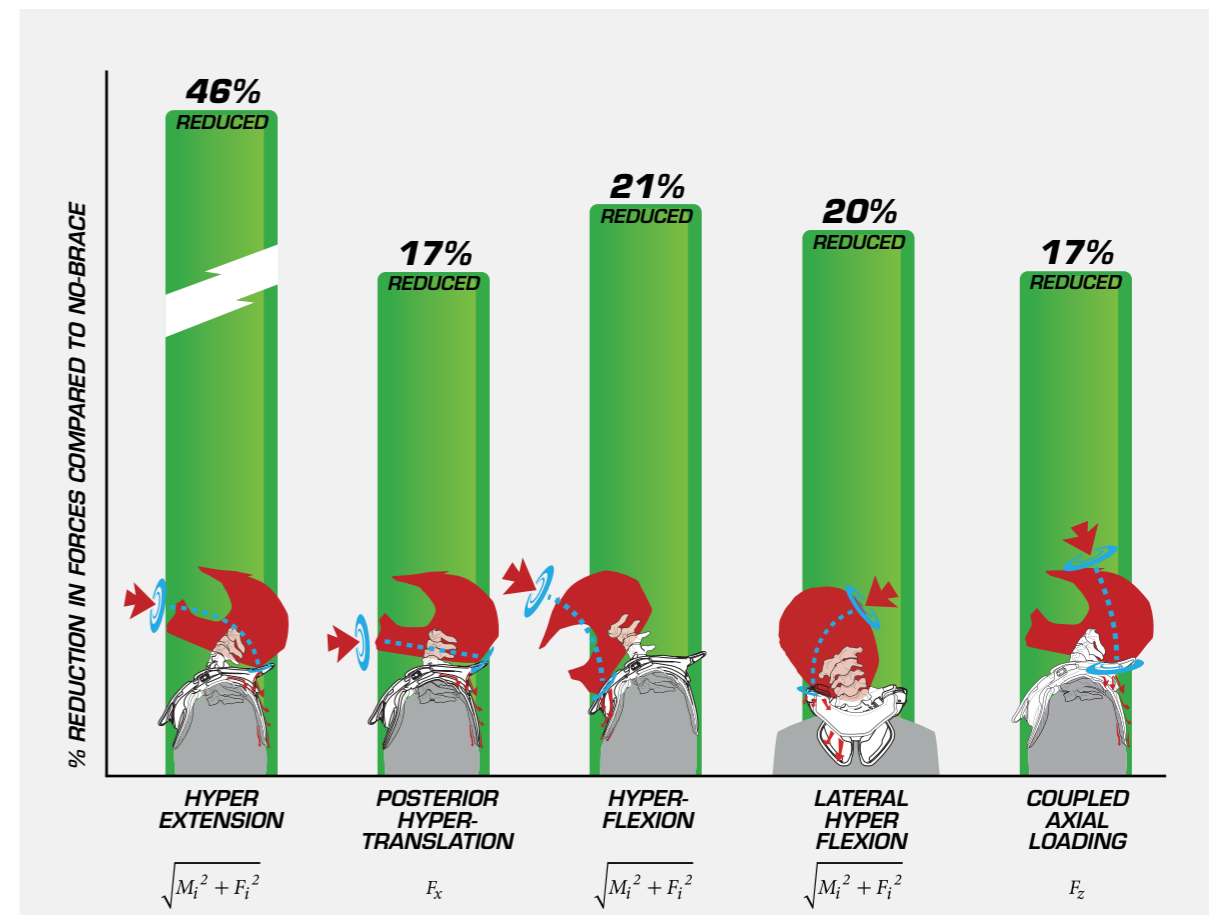
It also gives Leatt® engineers the confidence to expect a first round approval when submitting product to certification facilities, where appropriate, for examination.

# NECK BRACE TESTING

Each neck brace we design has to go through and pass the following tests in the Leatt® lab. Visit [www.leatt.com](http://www.leatt.com) for more in depth explanation on the tests.



Some test results we did on reduction of forces on neck wearing a Leatt® neck brace vs. wearing no brace



Hyperextension: Over-bending of the head in rearward direction. Posterior Hypertranslation: Extreme movement of head and helmet, rearward on the neck. Hyperflexion: Over-bending of the head in forward direction. Lateral Hyperflexion: Over-bending of the head to one side. Coupled Axial Loading: Helps prevent axial loading only when the axial forces act in combination with other mechanisms.



**NEW  
2015**

## GPX 6-5

MaxiWeave Carbon matrix for increased rigidity and lower weight.

Lightweight: ±620g still very rigid without flex

Lowered helmet rim striking platform profile

Improved helmet side clearance

On-board size adjusting, no parts needed

Folding thoracic for easy storage

New optional design clear strap included

3-way adjustable for great comfort and fit

CE certified as Personal Protective Equipment 89/686/EEC



GPX 6.5 CARBON

### GPX 6.5 NECK BRACE

SIZE	S/M	L/XL
CARBON	1015100100	1015100101

SPARE PARTS ON [WWW.LEATT.COM](http://WWW.LEATT.COM)



CE CERTIFIED AS PERSONAL PROTECTIVE EQUIPMENT



GPX 5.5 WHITE/BLACK



GPX 5.5 BLUE/BLACK



GPX 5.5 BLACK/GREY



GPX 5.5 ORANGE/WHITE

## GPX 5-5

Fiberglass reinforced polyamide chassis for rigidity  
Lowered rim striking platform for increased head and helmet freedom of motion

3 way adjustability for great comfort & fit

Easy to use emergency release mechanism for injured riders

Injected foam padding on upper surface is more durable, easier to clean

Folding rear thoracic strut for easier packing

Free, optional, clear chest strap included

CE certified as Personal Protective Equipment 89/686/EEC



CE CERTIFIED AS PERSONAL PROTECTIVE EQUIPMENT



© LEATT CORPORATION 2015

© LEATT CORPORATION 2015



## GPX 5.5 JR

- Fiberglass reinforced polyamide chassis for rigidity
- Lowered rim striking platform for increased head and helmet freedom of motion
- 3 Way adjustability for great comfort & fit
- Easy to use emergency release mechanism for injured riders
- Injected foam padding on upper surface is more durable, easier to clean
- Folding rear thoracic strut for easier packing
- Free, optional, clear chest strap included
- CE certified as Personal Protective Equipment 89/686/EEC



GPX 5.5 JR BLACK/GREEN



GPX 5.5 JR ORANGE/BLACK



GPX 5.5 JR BLACK/GREY

### GPX 5.5 JR NECK BRACE

SIZE	JUNIOR
BLACK / GREEN	1014010021
ORANGE / BLACK	1014010022
BLACK / GREY	1014010020

SPARE PARTS ON WWW.LEATT.COM



CE CERTIFIED AS PERSONAL PROTECTIVE EQUIPMENT

### GPX 4.5 NECK BRACE

SIZE	S/M	L/XL
WHITE	1015100130	1015100131
BLACK	1015100120	1015100121

SPARE PARTS ON WWW.LEATT.COM



GPX 4.5 WHITE



GPX 4.5 BLACK



## GPX 4.5

- Fiberglass reinforced polyamide chassis for rigidity
- Lowered rim striking platform for increased head and helmet freedom of motion
- 2 Way adjustability for great comfort & fit
- Easy to use emergency release mechanism for injured riders
- Injected foam padding on upper surface is more durable, easier to clean
- Folding rear thoracic strut for easier packing
- Free, optional, clear chest strap included
- CE certified as Personal Protective Equipment 89/686/EEC



# STX RR ROAD RACE

- Over the head fitting with emergency releases on each side
- Chassis is ultra light 100% carbon fiber, only 700g (1.55 pounds)
- Race adopted front construction for tucking behind the windscreen
- Hammock style rubber chin pad for increased comfort and safety
- Correct side clearance for race cornering
- Adjusts to fit all riding suits and selections of armor
- CE certified as Personal Protective Equipment 89/686/EEC
- One size fits riders from approx. 140 to 225 pounds



5WAY  
ADJUSTABLE  
FOR BEST FIT



CE CERTIFIED AS PERSONAL PROTECTIVE EQUIPMENT

## STX ROAD NECK BRACE

TYPE	S/M	L/XL	XXL
BLACK GREY	0100030101	0100030102	0100030103

SPARE PARTS ON WWW.LEATT.COM



STX ROAD



STX RR

## STX RR NECK BRACE

SIZE	L/XL
BLACK CARBON	1000210050

SPARE PARTS ON WWW.LEATT.COM

CE CERTIFIED AS PERSONAL PROTECTIVE EQUIPMENT



# STX ROAD

- Optimized for over the riding gear fit!
- Unique rear scapula wings designed to accommodate back armor or aerodynamic hump.
- Folding rear scapula wings allows for easy carrying/storage.
- Integrated padding accommodates movement for over-the-shoulder views.
- Rubber-coated front tip helps prevent motorcycle body scratches.
- Jacket zipper relief
- Comes with optional strap system
- Adjustable sizing to fit most riders
- Weighs only 740 grams/26 ounces!





# SNX TROPHY SNOWMOBILE

- Over the jacket and armor fitting
- Uses Arctic Fusion Compound™ (AFC™) to withstand extreme cold conditions
- Exclusive SNX padding resists snow sticking
- Adjustable height for optimal helmet clearance
- Moulded padding solution for extra low profile
- 5 holes scapula wings sliders for greater adjustment
- Scapula wings adopts to outside the jacket and Protectors
- Folding scapula wings for easy storage

**NEW 2015**



SNX TROPHY

## SNX TROPHY SNOWMOBILE NECK BRACE

SIZE	S/M	L/XL	XXL
BLACK	1014040010	1014040011	1014040012

SPARE PARTS ON WWW.LEATT.COM

CE CERTIFIED AS PERSONAL PROTECTIVE EQUIPMENT



5WAY  
ADJUSTABLE  
FOR BEST FIT

CE CERTIFIED AS PERSONAL PROTECTIVE EQUIPMENT

## SNX PILOT SNOWMOBILE NECK BRACE

SIZE	S	M
CLEAR / BLACK	0100950001	0100950002

SPARE PARTS ON WWW.LEATT.COM



SNX PILOT

# SNX PILOT SNOWMOBILE

Arctic Fusion Compound™ (AFC™) a special blend to withstand extreme cold conditions

Exclusive SNX clip-on padding resists snow sticking to it

Brace sock, waterproof & breathable barrier against winter elements, for rider comfort.

Fits under your jacket and armor

Fully adjustable upper tables (front & rear)

Approximate weight ±790g (± 26oz)



FREE WEATHER COLLAR WITH SNX PILOT



# CROSS STRAP

Leatt® Cross Straps are a universal, elastic neck brace strap system which is easy to use and fits all our neck braces except the STX brace. Hooks on to the shoulder tabs of the brace and crosses comfortably under your arms. Fully adjustable and one size fits all.



## CROSS STRAP

MODEL	PART #
all DBX/GPX/SNX	4300030401



## GPX FIEND PADDING KIT |

DESCRIPTION	SIZE	PART #
GREY - Race	•	4300031035
GREY- Pro Lite	S/M	4300031020
GREY- Pro Lite	L/XL	4300031021

## DECO PADDING KIT

DESCRIPTION	SIZE	PART #
STRIPE - Race	•	4300031040
PINK- Race	•	4300031041
STRIPE - Pro Lite	S/M	4300031025
STRIPE - Pro Lite	L/XL	4300031026

## KEVIN WINDHAM PADDING KIT

DESCRIPTION	SIZE	PART #
RED - GPX	•	4300030301
ORANGE - GPX	•	4300030306
RED - Race	•	4300031030
RED - Pro	S	4300031010
RED - Pro	M	4300031011
RED - Pro Lite	S/M	4300031015
RED- Pro Lite	L/XL	4300031016

## STX SAFETY REFLECTIVE STICKER KIT

DESCRIPTION	SIZE	PART #
REFLECTIVE	•	4300030221

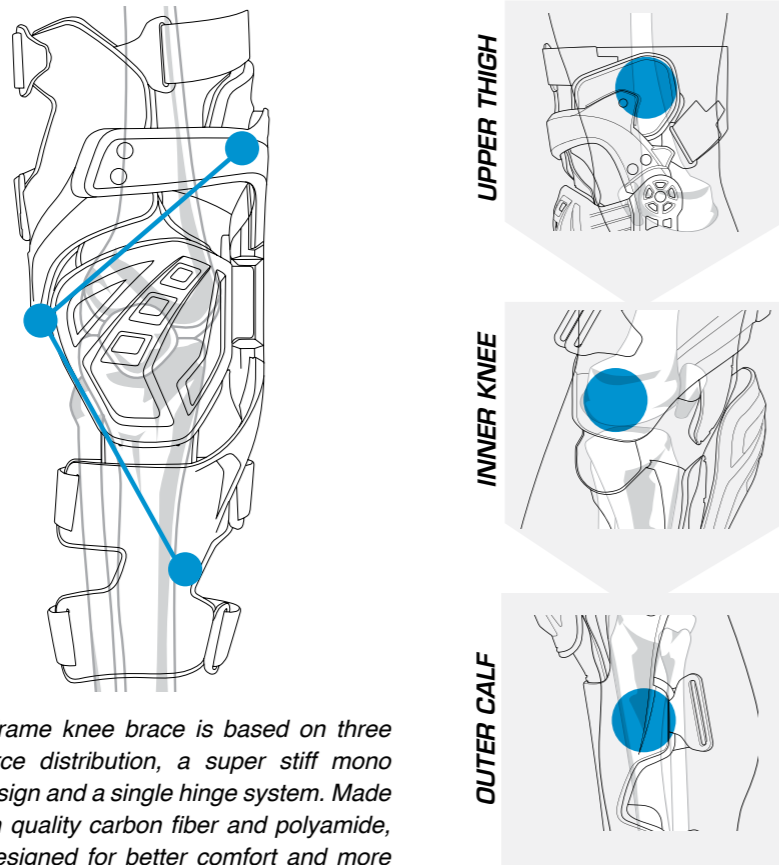
# PADDING KITS

Personalize your Leatt® neck brace with our range of padding/sticker kits. Made from comfortable biofoam and lycra, all tailored to fit the appropriate brace



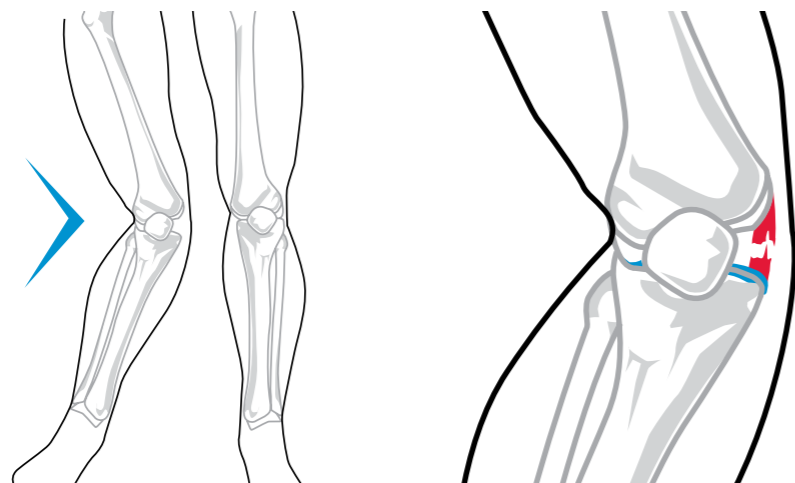
# 3 POINT FORCE DISTRIBUTION

NO KNEE BRACE CAN PREVENT ALL FORESEEABLE KNEE INJURIES BUT LEATT® LABORATORY ENGINEERS AND OTHER MEDICAL PROFESSIONALS HAVE COME UP WITH A RADICAL DESIGN TO HELP FURTHER REDUCE INJURIES OVER WHAT TRADITIONAL "CAGE TYPE" KNEE BRACE DESIGNS CAN DO.



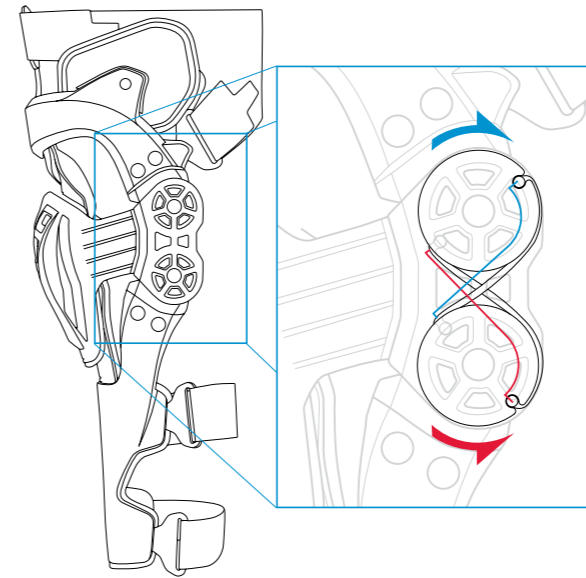
The C-Frame knee brace is based on three point force distribution, a super stiff mono hinge design and a single hinge system. Made with high quality carbon fiber and polyamide, it was designed for better comfort and more protection.

**TO HELP PREVENT MCL (MEDIAL COLLATERAL LIGAMENT) & MENISCUS TEAR INJURIES**

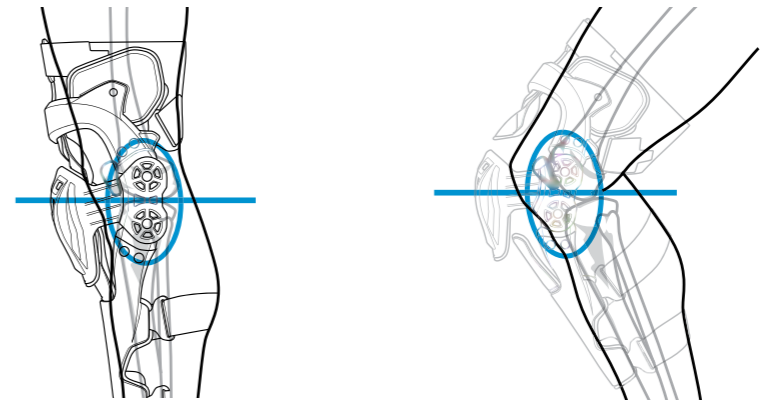


# SINGLE HINGE CONSTRUCTION

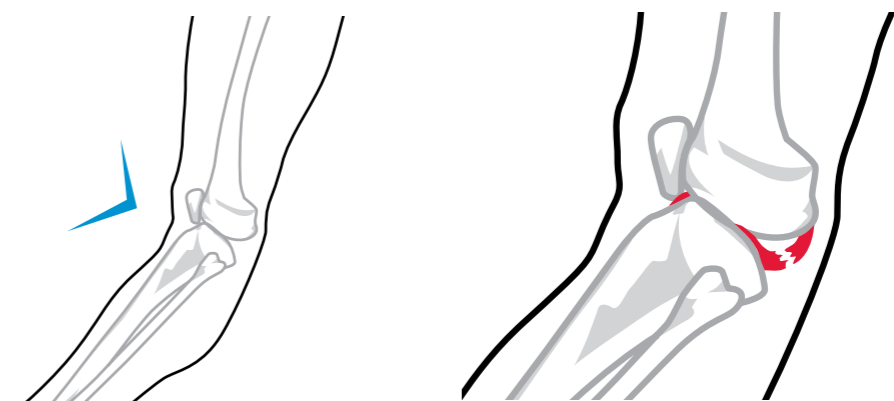
Leatt® IntelliLink hinge with double pivot points replicates the knee natural movement. BioLink hinge ligaments inside the Leatt® IntelliLink hinge controls knee rotation & shear



**ALIGNS TO KNEES NATURAL MOVEMENT**



**TO HELP PREVENT ACL (ANTERIOR CRUCIATE LIGAMENT) INJURIES**



**SAFETY LOCKOUT**

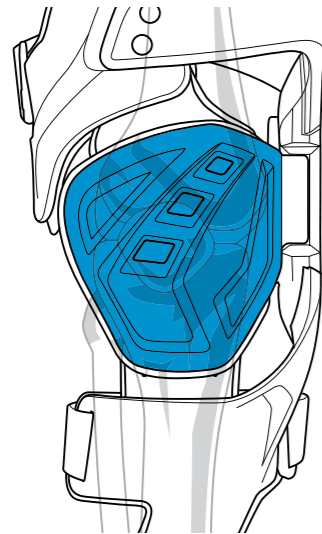


The IntelliLink's Adjustable soft lockout also prevents hyperextension and ACL injuries

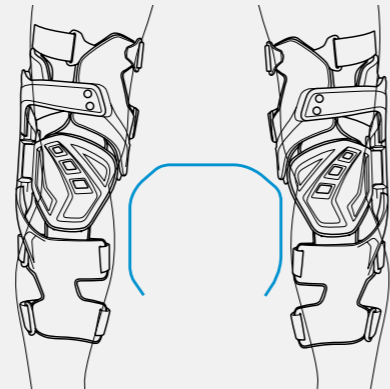


# EXTRA COMFORT AND SAFETY

**KNEE CUP IMPACT TESTED  
AND CE CERTIFIED**

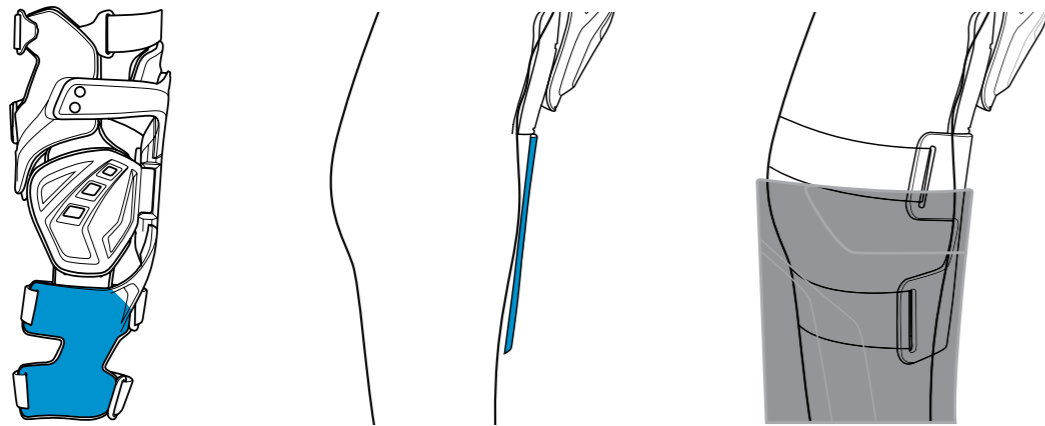


**GET IN YOUR RIDING POSITION**

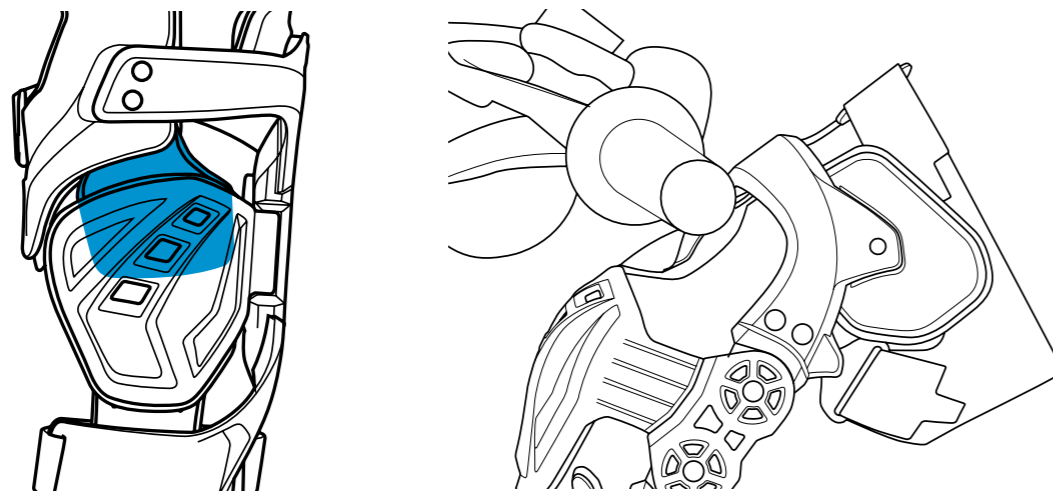


The open area created by the C - arm also gives riders the opportunity to get into a more comfortable riding position, with your knees as close to the tank as possible

**DESIGNED TO FIT COMFORTABLY IN BOOTS**



**DESIGNED TO FIT COMFORTABLY IN BOOTS**



**NEW  
2015**



# C-FRAME

- 3-point force distribution
- Super stiff mono hinge construction
- Adjustable soft lock outs help prevent hyperextension
- Super low profile of inner knee for better bike control
- X-straps on thigh and calf for better fitment
- Leatt® signature 3D design for the best possible fit
- C-Arm made of die-cast 383 Aluminum alloy
- Integrated CE 1621-1 impact certified knee (patella) protection
- Engineered brace fracture points help prevent upper and lower leg injuries
- Super comfortable, low profile shin bone plate with load distribution pad that fits inside all boots
- Adjustable inner knee load pad
- Leatt® IntelliLink hinge with double pivot points
- Ferro-Ligaments controls knee rotation & shear
- Sold in pairs
- 3 sizes: S/M, L/XL, XXL



**C-FRAME KNEE BRACE**

SIZE	S/M	L/XL	XXL
CARBON	5014101001	5014101002	5014101003

SPARE PARTS ON [WWW.LEATT.COM](http://WWW.LEATT.COM)

**CARBON  
CONSTRUCTION**



**CE** CERTIFIED AS PERSONAL PROTECTIVE EQUIPMENT

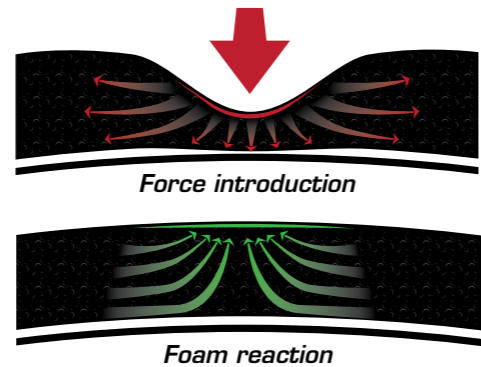
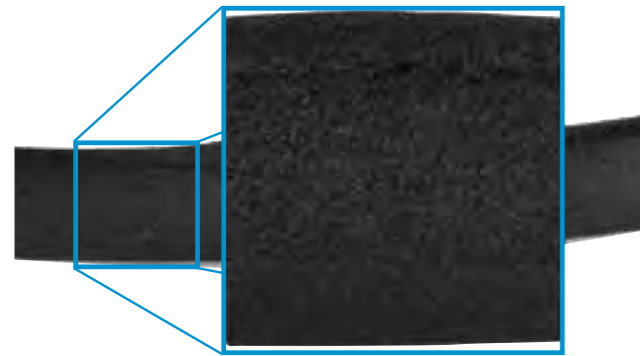


# 3DF IMPACT FOAM

AT LEATT® WE'RE SERIOUS ABOUT PROTECTION! 3DF IS A LINE OF LIGHTWEIGHT SOFT PROTECTORS WITH VISCOELASTIC PROPERTIES, PROVIDING OPTIMUM SHOCK ABSORPTION OVER A WIDE RANGE OF TEMPERATURES AS WELL AS CONFORMING TO YOUR BODY FOR MAXIMUM COMFORT.

## 3DF

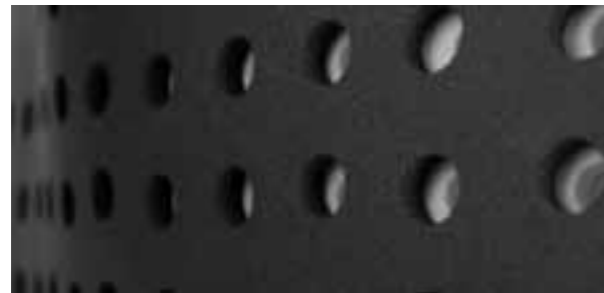
THE 3DF FOAM ITSELF IS VERY LIGHT AND FLEXIBLE WHEN MOVED SLOWLY.



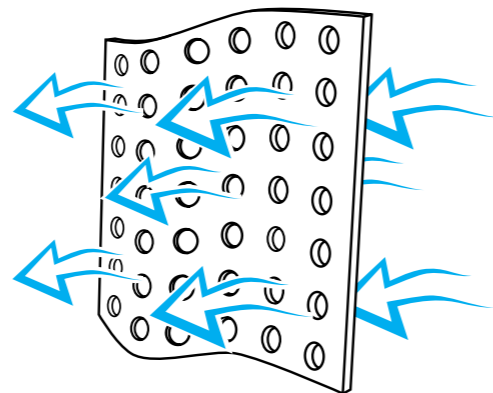
Immediately after impact our 3DF foam absorbs the energy and its memory effect allows the foam to return to its original position, preparing it for the next impact. The quicker the force is introduced the quicker the reaction takes place.

# AIRFIT TECHNOLOGY PERFORATED MULTILAYERED IMPACT FOAM

PERFORATION



Perforated foam technology makes the impact foam lighter and increases the ventilation dramatically



# MULTI LAYERED TECHNOLOGY



The original 3DF foam uses a solid single layer structure that results in good impact absorption, but limits the amount of bending in the garment.



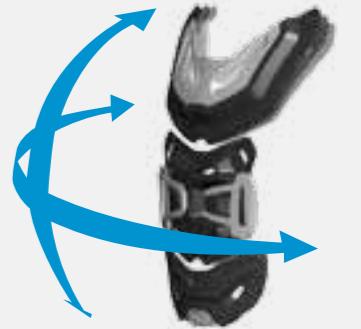
The multilayer 3DF Airfit foam uses a sandwich type lay up which allows relative movement between layers and therefore results in easier bending and better comfort for the rider while maintaining the same level of impact absorption.

# HARDSHELL PROTECTION

THE HARDSHELL PROTECTORS FROM LEATT® IS A CE CERTIFIED PROTECTION LINE THAT FEATURES THE HARDSHELL OUTER SHIELD MADE OF HIGH DENSITY POLY ETHYLENE (HDPE) . WHETHER HIGH IMPACT OR STONE DEFLECTION, THE HARDSHELL RANGE CAN HANDLE IT. DESIGNED TO KEEP YOUR BODY ON YOUR BIKE AND HEAD ON THE RIDE.

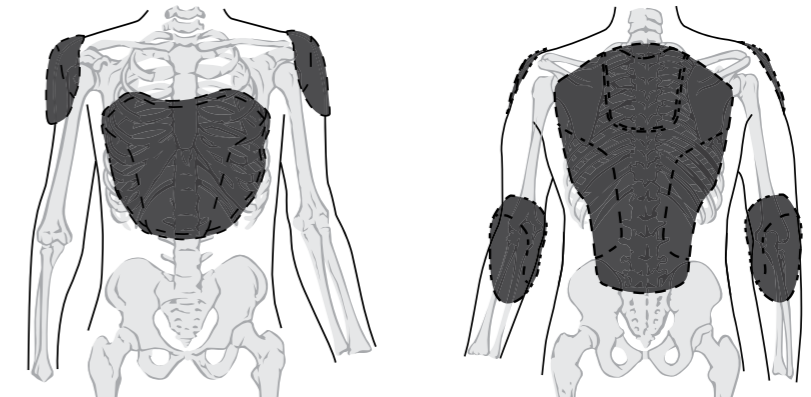


Leatt® is always pressing forward with our designs. The articulating panel system is a new development at Leatt® that aims to give you more range of motion and ventilation on a Hardshell based protector. The individual Hardshell panels gives greater natural movement through greater rotational axis. The panel system's smaller individual panels also create a better ventilation platform without reducing protection



# ERGONOMIC DESIGN

Leatt® protectors are made to cover many vital body areas. These areas are mainly the chest, back, shoulders and elbows. Each Protector is Impact tested and CE Certified. Whether it be hard or soft protection, we have your vital areas covered



# NECK BRACE INTEGRATION



Leatt®'s patent pending BraceOn system is designed to secure your neck brace to your protector. The strap is situated to the shoulder of our protectors and straps around the shoulder wings of a Leatt® neck brace. This allows the brace to move independently from the protector yet still stay attached.

Always look out for the BraceOn logo to identify a product with the technology





# ADULT FUSION 3-0

First ever neck and torso protection for adults

Neck protection CE certified as Personal Protective Equipment 89/686/EEC

CE certified for impact protection

- 1621-2 Level 1 Back
- 1621-3 Level 1 Front
- 1621-1 Shoulders

3 dimensional designed for perfect fit

Easy to use, no-tool, sizing adjustments for a precise fit

Extra Flank padding

Light weight

Great comfort

Well ventilated



**NEW 2015**



FUSION 3.0 WHITE



FUSION 3.0 BLACK

## ADULT FUSION NECK VEST 3.0

SIZE	S/M	L/XL	XXL
WHITE	1015400110	1015400111	1015400112
BLACK	1015400100	1015400101	1015400102



CE CERTIFIED AS PERSONAL PROTECTIVE EQUIPMENT

CE CERTIFIED AS PERSONAL PROTECTIVE EQUIPMENT

3DF



## FUSION NECK VEST 2.0

SIZE	S/M	L/XL	XXL
WHITE	1014010015	1014010016	1015400124
RED	1014010010	1014010011	1015400123
GREEN	1014010001	1014010002	1015400121
ORANGE	1014010005	1014010006	1015400122
BLACK	1014010018	1014010019	1014010020



FUSION 2.0 BLACK



FUSION 2.0 WHITE



FUSION 2.0 GREEN



FUSION 2.0 RED



FUSION 2.0 ORANGE



# YOUTH FUSION 2-0

Neck and Torso protection

Neck protection CE certified as Personal Protective Equipment 89/686/EEC

CE certified for impact protection

- 1621-2 Level 1 Back
- 1621-3 Level 1 Front
- 1621-1 Shoulders

Neck brace structure made of fiberglass reinforced polyamide resin

Leatt® 3DF AirFit impact foam for premium body protection and ventilation

Extra Flank padding

3 dimensional designed for perfect fit

Light weight

Easy to use, no-tool, sizing adjustments for a precise fit



# 5-5 BODY PROTECTOR

CE certified for impact protection  
 Back EN 1621-2, Level 2  
 Front prEN 1621-3, Level 2  
 Shoulder CE EN 1621-1

Integrating, multilayer flank protection area

47 ventilation slots for maximum cooling

Perforated 3DF foam helps air flow

Hard shell outer shield made of High Density Poly Ethylene (HDPE)

Adjustable over the shoulder straps help insure a great fit

Fits riders approx.

S/M 160 - 172cm (5'2" - 5'6" ft)

L/XL 172 - 184cm (5'6" - 6' ft)

XXL 184 - 196cm (6' - 6'6" ft)

5.5

**NEW 2015**



5.5 BODY PROTECTOR WHITE



5.5 BODY PROTECTOR BLACK

## 5.5 BODY PROTECTOR

SIZE	S/M	L/XL	XXL
WHITE	5015400110	5015400111	5015400112
BLACK	5015400100	5015400101	5015400102



IMPACT TESTED & CE CERTIFIED

## 5.5 BODY VEST

SIZE	S/M	L/XL	XXL
WHITE	5015400130	5015400131	5015400132
BLACK	5015400120	5015400121	5015400122



5.5 BODY VEST BLACK



5.5 BODY VEST WHITE

**NEW 2015**

# 5-5 BODY VEST

CE certified for impact protection  
 Back EN 1621-2, Level 2  
 Front prEN 1621-3, Level 2

Integrating, multilayer flank protection area

47 ventilation slots for maximum cooling

Perforated 3DF foam helps air flow

Hard shell outer shield made of High Density Poly Ethylene (HDPE)

Adjustable over the shoulder straps help insure a great fit

Fits riders approx.

S/M 160-172cm (5'2" - 5'6" ft)

L/XL 172 - 184cm (5'6" - 6' ft)

XXL 184-196cm (6' - 6'6" ft)



# AIRFIT LITE BODY PROTECTOR

Perforated, multilayer 3DF AirFit foam for a lighter, better fit and more ventilation

CE certified for impact protection

Back protection EN1621-2 level 1

Chest protection prEN1621-3 level 1

Elbow + Shoulder protection EN1621-1

MoistureCool wicking fabric helps keep you cooler

Elastic waist belt to give more secure protector positioning

Easy to wear, zip-up, compression sock design to maximize evaporation

BraceOn flexible neck brace connection

Removable Impact foam for easy washing

3 Adult sizes fits riders approx:

S/M 160-172cm (5'3"-5'8")

L/XL 172-184cm (5'8"-6'0")

XXL 184-196cm (6'0"-6'6")



## 3DF AIRFIT BODY PROTECTOR

MODEL	S/M	L/XL	XXL
ADULT	5014101211	5014101212	5014101213



# AIRFIT BODY PROTECTOR

Perforated, multilayer 3DF AirFit foam for a lighter, better fit and more ventilation

CE certified for impact protection

Back protection EN1621-2 level 2

Chest protection prEN1621-3 level 2

Elbow + shoulder protection EN1621-1

MoistureCool wicking fabric helps keep you cooler

Elastic waist belt to give more secure protector positioning

Easy to wear, zip-up, compression sock design to maximize evaporation

BraceOn flexible neck brace connection

Removable Impact foam for easy washing

3 Adult sizes fits riders approx:

S/M 160-172cm (5'3"-5'8")

L/XL 172-184cm (5'8"-6'0")

XXL 184-196cm (6'0"-6'6")

## 3DF AIRFIT LITE BODY PROTECTOR

MODEL	S/M	L/XL	XXL
ADULT	5015400150	5015400151	5015400152





# AIRFIT LITE BODY VEST

Perforated, multilayer 3DF AirFit foam for a lighter, better fit and more ventilation

CE certified for impact protection

Back protection EN1621-2 level 1

Chest protection prEN1621-3 level 1

MoistureCool wicking fabric helps keep you cooler

Elastic waist belt to give more secure protector positioning

Easy to wear, zip-up, compression sock design to maximize evaporation

BraceOn flexible neck brace connection

Removable Impact foam for easy washing

3 Adult sizes fits riders approx:



**NEW  
2015**



## 3DF AIRFIT LITE BODY VEST

MODEL	S/M	L/XL	XXL
ADULT	5015400140	5015400141	5015400142



IMPACT TESTED & CE CERTIFIED



IMPACT TESTED & CE CERTIFIED

## 3DF AIRFIT BODY VEST

MODEL	S/M	L/XL	XXL
ADULT	5014101201	5014101202	5014101203



# AIRFIT BODY VEST

Perforated, multilayer 3DF AirFit foam for a lighter, better fit and more ventilation

CE certified for impact protection

Back protection EN1621-2 level 2

Chest protection prEN1621-3 level 2

MoistureCool wicking fabric helps keep you cooler

Elastic waist belt to give more secure protector positioning

Easy to wear, zip-up, compression sock design to maximize evaporation.

BraceOn flexible neck brace connection

Removable Impact foam for easy washing

3 Adult sizes fits riders approx:



IMPACT TESTED & CE CERTIFIED

## 3DF BACK PROTECTOR

MODEL	S/M	L/XL	XXL
ADULT	5000402005	5000402006	5000402007



# 3DF BACK PROTECTOR

3DF AirFit foam for a lighter and better fit

CE certified for impact protection

Back protection EN1621-2 level 2

MoistureCool wicking fabric helps keep you cooler

Easy to wear, zip-up, compression sock design to maximize evaporation.

BraceOn flexible neck brace connection

Removable Impact foam for easy washing

3 Adult sizes fits riders approx:

S/M 160-172cm (5'3"-5'8")

L/XL 172-184cm (5'8"-6'0")

XXL 184-196cm (6'0"-6'6")



# 5.5 PRO HD CHEST PROTECTOR

Impact tested and CE certified to:

Back, EN 1621-2, Level 2  
Front, prEN 1621-3, Level 2  
Shoulders, EN 1621-1

Integrating, multilayer flank protection area

Removable, bio-foam upper arm roost guards

Fits over or under the jersey

47 ventilation slots for maximum cooling

Perforated 3DF foam helps air flow

Hard shell outer shield made of High Density Poly Ethylene (HDPE)

Adjustable over the shoulder straps help ensure a great fit

Fits riders approx.

Adult approx. 54 – 95 kg (120-210 Lbs)  
XXL riders approx. 90 – 130 kg (200-290 Lbs)



5.5 PRO HD WHITE



5.5 PRO HD BLACK



**CHEST PROTECTOR 5.5 PRO HD**

SIZE	ADULT	XXL
WHITE	5014101102	n/a
BLACK	5014101101	5014101103



IMPACT TESTED & CE CERTIFIED



IMPACT TESTED & CE CERTIFIED



5.5 PRO WHITE



5.5 PRO BLACK

## CHEST PROTECTOR 5.5 PRO

SIZE	ADULT	XXL
WHITE	5014101112	n/a
BLACK	5014101111	5014101113

# 5.5 PRO CHEST PROTECTOR

Impact tested and CE certified to:

Back, EN 1621-2, Level 2  
Front, prEN 1621-3, Level 2  
Shoulders, EN 1621-1

Removable, bio-foam upper arm roost guards

Fits over or under the jersey

47 ventilation slots for maximum cooling

Perforated 3DF foam helps air flow

Hard shell outer shield made of High Density Poly Ethylene (HDPE)

Adjustable over the shoulder straps help insure a great fit

Fits riders approx.

Adult approx. 54 – 95 kg (120-210 Lbs)  
XXL riders approx. 90 – 130 kg (200-290 Lbs)



IMPACT TESTED & CE CERTIFIED



5.5 PRO LITE WHITE



5.5 PRO LITE BLACK

## CHEST PROTECTOR 5.5 PRO LITE

SIZE	ADULT	XXL
WHITE	5014101122	n/a
BLACK	5014101121	5014101123

# 5.5 PRO LITE CHEST PROTECTOR

Impact tested and CE certified to:

Back, EN 1621-2, Level 2  
Front, prEN 1621-3, Level 2

Fits over or under the jersey

47 ventilation slots for maximum cooling

Perforated 3DF foam helps air flow

Hard shell outer shield made of High Density Poly Ethylene (HDPE)

Adjustable over the shoulder straps help ensure a great fit

Fits riders approx.

Adult approx. 54 – 95 kg (120-210 Lbs)  
XXL riders approx. 90 – 130 kg (200-290 Lbs)



# 4.5 CHEST PROTECTOR

CE certified for impact protection:

CE EN1621-2 level 2 Back

CE EN1621-3 level 2 Front

Front, back and flank impact padding

Leatt® 3DF foam for impact absorption

Leatt® HDPE High Density Poly Ethylene  
hardshell outer protective shield

Multi layer multi plate articulating design

3D design for great fit and comfort

Ventilation slots for maximum airflow

BraceOn neck brace fitting system

Fits riders approx.

Adult approx. 54 – 95 kg (120-210 Lbs)

XXL riders approx. 90 – 130 kg (200-290 Lbs)



**NEW  
2015**



4.5 WHITE



4.5 BLACK

## CHEST PROTECTOR 4.5

SIZE	ADULT	XXL
WHITE	5015300110	5015300111
BLACK	5015300100	5015300101



IMPACT TESTED & CE CERTIFIED



## ADVENTURE CHEST PROTECTOR

VERSION	WHITE	BLACK
ADVENTURE	0500030241	0500030240



ADVENTURE WHITE



ADVENTURE BLACK

## ADVENTURE CHEST PROTECTOR

CE approved to en 14021

Over or under the jersey use

High Density Poly Ethylene (HDPE ) hardshell  
outer protective shield

Liberal venting helps keep rider cool

Adjusters allow for personalized fit

BraceOn neck brace fitting system

Removable shoulder and upper arm guards

Fits riders from 54 - 109kgs (120-240lbs.)



# CHEST PROTECTOR LITE

CE approved to en 14021  
 Over or under the jersey use  
 High Density Poly Ethylene (HDPE ) hardshell  
 outer protective shield  
 Liberal venting helps keep rider cool  
 Adjusters allow for personalized fit  
 BraceOn neck brace fitting system  
 Fits riders from 54 - 109kgs (120-240lbs.)



LITE WHITE



LITE BLACK



CHEST PROTECTOR LITE

VERSION	WHITE	BLACK
LITE	0500030501	0500030500

**NEW  
2015**



SHOX WHITE



SHOX BLACK



SHOX RED



SHOX BLUE



SHOX ORANGE

# CHEST PROTECTOR LITE SHOX

CE approved to en 14021  
 Over or under the jersey use  
 High Density Poly Ethylene (HDPE ) hardshell  
 outer protective shield  
 Liberal venting helps keep rider cool  
 Adjusters allow for personalized fit  
 BraceOn neck brace fitting system  
 Fits riders from 54 - 109kgs (120-240lbs.)

CHEST PROTECTOR LITE SHOX

VERSION	PART #
WHITE	5015300124
BLACK	5015300120
RED	5015300123
BLUE	5015300121
ORANGE	5015300122





# YOUTH 5.5 BODY PROTECTOR JR

CE certified for impact protection  
 Integrating, multilayer flank protection area  
 47 ventilation slots for maximum cooling  
 Perforated 3DF foam helps air flow  
 Hard shell outer shield made of High Density Poly Ethylene (HDPE)  
 Adjustable over the shoulder straps help insure a great fit  
 Fits riders approx.  
 S/M 134-146cm (4'4"-4'8"ft)  
 L/XL 147-159cm (4'8"-5'2"ft)

**NEW 2015**



YOUTH 5.5 BODY PROTECTOR JR

MODEL	S/M	L/XL
JUNIOR	5015400650	5015400651



IMPACT TESTED & CE CERTIFIED



IMPACT TESTED & CE CERTIFIED

YOUTH 3DF BODY PROTECTOR

MODEL	S/M	L/XL
JUNIOR	5014210141	5014210142



# YOUTH 3DF BODY PROTECTOR JR

Perforated, multilayer 3DF AirFit foam for a lighter, better fit and more ventilation  
 CE certified for impact protection  
 Back protection EN1621-2 level 2  
 Chest protection prEN1621-3 level 2  
 Elbow + shoulder protection EN1621-1  
 MoistureCool wicking fabric helps keep you cooler  
 Easy to wear, zip-up, compression sock design to maximize evaporation  
 BraceOn flexible neck brace connection  
 Removable Impact foam for easy washing  
 Fits riders approx:  
 S/M 134-146cm (4'4"-4'8"ft)  
 L/XL 147-159cm (4'8"-5'2"ft)





## YOUTH 5.5 PRO HD CHEST PROTECTOR JR

**Impact tested and CE certified to:**

- Back, EN 1621-2, Level 1
- Front, prEN 1621-3, Level 2
- Shoulders, EN 1621-1

Integrating, multilayer flank protection area

Fits over or under the jersey

Ventilation slots for maximum cooling

Perforated 3DF foam helps air flow

Hard shell outer shield made of High Density Poly Ethylene (HDPE)

Adjustable over the shoulder straps help ensure a great fit

Fits riders approx.

132 to 158cm (4' 3" to 5' 2"ft)



IMPACT TESTED & CE CERTIFIED

### YOUTH CHEST PROTECTOR 5.5 PRO JR

SIZE	JUNIOR
WHITE	5014210132



## YOUTH 5.5 PRO CHEST PROTECTOR JR

**Impact tested and CE certified to:**

- Back, EN 1621-2, Level 1
- Front, prEN 1621-3, Level 2
- Shoulders, EN 1621-1

Fits over or under the jersey

Ventilation slots for maximum cooling

Perforated 3DF foam helps air flow

Hard shell outer shield made of High Density Poly Ethylene (HDPE)

Adjustable over the shoulder straps help insure a great fit

Fits riders

132 to 158cm (4' 3" to 5' 2"ft)

### YOUTH CHEST PROTECTOR 5.5 PRO HD JR

SIZE	JUNIOR
BLACK	5014210131



IMPACT TESTED & CE CERTIFIED



# YOUTH CHEST PROTECTOR PRO JR

CE certified for impact protection  
Back EN1621-2 level 2  
Chest prEN1621-3 level 2

Works perfectly with or without a Leatt® neck brace

Light, only 1.5 pounds (.65 kgs)

Liberal venting helps keep riders cool

Made from extremely tough HDPE plastic and washable biofoam

Easily adjustable waist straps for a great fit

Fits easily under of over the jersey

Fits riders approx.  
31 - 54 kg (70 - 120 lbs)



## YOUTH CHEST PROTECTOR JR ADVENTURE

MODEL	WHITE	BLACK
PART#	0500030244	0500030243



ADVENTURE JR BLACK



PRO JR BLACK



ADVENTURE JR WHITE



PRO JR WHITE

## YOUTH CHEST PROTECTOR PRO JR

VERSION	WHITE	BLACK
PART#	5000301026	5000301025



# YOUTH CHEST PROTECTOR ADVENTURE JR

CE certified to EN 14021

Works perfectly with or without a Leatt® neck brace

Liberal venting helps keep riders cool

Made from extremely tough HDPE plastic and washable biofoam

Easily adjustable waist straps for a great fit

Fits easily under of over the jersey

Fits riders approx.  
31 - 54 kg (70 - 120 lbs)



# AIRFLEX KNEE GUARD

Super slim 6mm protector profile  
 Armourgel ultra slim impact absorbing gel  
 MoistureCool wicking fabric  
 Silicone lamination to keep protector in place  
 CE certified for impact protection EN1621-1  
 Great fit and very comfortable by 3D design



**NEW 2015**



**ULTRA LIGHT 110g**

## AIRFLEX KNEE GUARD

SIZE	S/M	L/XL	XXL
BLACK	5015400410	5015400411	5015400412



IMPACT TESTED & CE CERTIFIED



IMPACT TESTED & CE CERTIFIED

## 3DF HYBRID EXT KNEE GUARD

SIZE	BLACK	LIME	BLUE
JR	5015400660	n/a	n/a
S/M	5015400460	5015400470	5015400450
L/XL	5015400461	5015400471	5015400451
XXL	5015400462	5015400472	5015400452



HYBRID EXT LIME



HYBRID EXT BLACK



HYBRID EXT BLUE

**NEW 2015**

# 3DF HYBRID EXT KNEE GUARD

Hybrid combination  
 Soft and comfortable 3DF impact foam  
 Deflecting Hard Shell  
 MoistureCool wicking fabric  
 Silicone lamination to keep protector in place  
 CE certified for impact protection EN1621-1  
 Great fit and very comfortable by 3D design





# 3DF HYBRID ENDURO KNEE GUARD

- Hybrid combination
- Soft and comfortable 3DF impact foam
- Deflecting Hard Shell
- MoistureCool wicking fabric
- Silicone lamination to keep protector in place
- CE certified for impact protection EN1621-1
- Great fit and very comfortable by 3D design

**NEW 2015**



HYBRID ENDURO BLUE



HYBRID ENDURO LIME



HYBRID ENDURO BLACK

## 3DF HYBRID ENDURO KNEE GUARD

SIZE	BLACK	LIME	BLUE
S/M	5015400440	5015400430	5015400420
L/XL	5015400441	5015400431	5015400421
XXL	5015400442	5015400432	5015400422



IMPACT TESTED & CE CERTIFIED



IMPACT TESTED & CE CERTIFIED

## 3DF KNEE GUARD

SIZE	BLACK
KIDS	5014210081
JR	5000403101
S/M	5000403105
L/XL	5000403106
XXL	5000403107



# 3DF KNEE GUARD

Impact tested and CE certified to CE EN 1621-1

Super light weight

MoistureCool wicking fabric helps keep you cool

Abrasion resistant aramid fiber outer layer

Silicone laminated stretch for rock solid fitting

Side padding helps protect the delicate parts of the knee

Adjustable strap for an easy individual fit

Available in Kids, Junior, S/M, L/XL & XXL



# DUAL AXIS KNEE GUARD

3 dimensionally designed for optimal fit  
 Impact tested and CE certified to EN 1621-1  
 Abrasion tested and CE certified to EN 13595-2, Level 2  
 Anatomically correct dual pivot points  
 Light at only 1.9 lbs (850g) per pair  
 Slim design for use over or under riding pants, fits well with boots  
 9 large vents help keep you cool  
 Made from High Density Poly Ethylene, HDPE, and washable Leatt® foam  
 Strap system resists binding



DUAL-AXIS WHITE



DUAL-AXIS BLACK

DUAL AXIS KNEE GUARD			
SIZE	S/M	L/XL	XXL
BLACK	5014101010	5000403001	5014101011
WHITE	5014101020	5014101021	5014101022



"Probably the most comfortable knee cups I've tried. Rates 47 out of 50 for function."

"For under \$100 USD this is a solid option for protection."

## KNEE GUARD EXT

SIZE	JR	S/M	L/XL
BLACK	5014210061	5014210041	5014210042
WHITE	n/a	5014210051	5014210052



EXT BLACK



EXT WHITE

# KNEE GUARD EXT

Impact tested and CE certified to EN 1621-1  
 HardShell impact and sliding surface extends to top of foot  
 Specific right and left sides  
 3DF impact absorption  
 3D designed for optimal fit  
 Vented plates for maximum airflow  
 MoistureCool wicking fabric helps keep you cool  
 Inside silicone laminations help keep protector in place





# ENDURO KNEE GUARD

Impact test and CE certified to EN 162-1

Abrasion tested and CE certified to EN 13595-2, Level 2

HardShell protectors made of high density polyethylene

Silicone laminated straps keeps protector in place

Effective ventilation

Co-molded rubber edges increases comfort

Washable



ENDURO BLACK



ENDURO WHITE

**ENDURO KNEE GUARD**

SIZE	S/M	L/XL
BLACK	5014210021	5014210022
WHITE	5014210031	5014210032



IMPACT TESTED & CE CERTIFIED

© LEATT CORPORATION 2015



IMPACT TESTED & CE CERTIFIED



# AIRFLEX ELBOW GUARD

Super slim 6mm protector profile

Armourgel ultra slim impact absorbing gel

MoistureCool wicking fabric

Silicone lamination to keep protector in place

CE certified for impact protection EN1621-1

Great fit and very comfortable by 3D design

## AIRFLEX ELBOW GUARD

SIZE	S/M	L/XL	XXL
BLACK	5015400260	5015400261	5015400262

© LEATT CORPORATION 2015



# 3DF HYBRID ELBOW GUARD

- Hybrid combination
- Soft and comfortable 3DF impact foam
- Deflecting HardShell
- MoistureCool wicking fabric
- Silicone lamination to keep protector in place
- CE certified for impact protection EN1621-1
- Great fit and very comfortable by 3D design



**NEW 2015**



**HYBRID ENDURO BLUE**  
3DF HYBRID ELBOW GUARD

**HYBRID ENDURO LIME**

**HYBRID ENDURO BLACK**

SIZE	BLACK	LIME	BLUE
JR	5015400605	n/a	n/a
S/M	5015400290	5015400280	5015400270
L/XL	5015400291	5015400281	5015400271
XXL	5015400292	5015400282	5015400272



IMPACT TESTED & CE CERTIFIED



IMPACT TESTED & CE CERTIFIED

## 3DF ELBOW GUARD

SIZE	BLACK
KIDS	5014210071
JR	5000401101
S/M	5000401105
L/XL	5000401106
XXL	5000401107



## 3DF ELBOW GUARD

- 3-dimensionally designed for a perfect fit
- Impact tested and CE certified to CE EN 1621-1
- Low profile shape allows guard to be worn under or over riding jersey
- Silicone laminations keep protectors in place
- MoistureCool wicking fabric helps keep you cool
- Abrasion resistant aramid fiber outer layer
- Machine washable
- Weights only 320 grams (9 ounces) per pair/junior
- 4 sizes: Kids, Junior, S/M, L/XL & XXL



# CONTOUR ELBOW GUARD

Impact tested and CE certified to EN 162-1

Abrasion tested and CE certified to EN 13595-2, Level 2

HardShell protectors made of high density polyethylene

Silicone laminated straps keeps protector in place

Effective ventilation

Co-molded rubber edges increases comfort

Washable



**NEW 2015**



CONTOUR BLACK



CONTOUR WHITE

## CONTOUR ELBOW GUARD

SIZE	BLACK	WHITE
JR	5015400600	n/a
S/M	5015200100	5015200110
L/XL	5015200101	5015200111
XXL	5015200102	5015200112



IMPACT TESTED & CE CERTIFIED



IMPACT TESTED & CE CERTIFIED

## HARDSHELL ELBOW GUARD

SIZE	S/M	L/XL	XXL
BLACK	5000401005	5000401006	5000401007



# HARDSHELL ELBOW GUARD

Weighs only 320 grams (9 ounces) per pair  
 Moisture Cool wicking fabric helps keep you cool  
 HDPE HardShell outer protective shield  
 Silicone laminated stretch for rock solid fitting  
 Ventilated mesh  
 Impact tested and CE certified to EN 1621-1  
 Abrasion tested and CE certified to EN 13595  
 Low profile shape allows guard to be worn under/over riding jersey



# SHOULDER BRACE

A redefined method of shoulder protection

Unique strap "pull angles" to realign the joint and prevent shoulder dislocations

Upper arm is pulled rearwards and inwards into socket offering stabilization and compression to the shoulder

Creates great sense of security for previously dislocated shoulder

Shoulder impact tested and CE certified to EN 1621-1

Snug under the jersey fit

Adjustable for compression & fitment



**NEW 2015**



SHOULDER BRACE

SIZE	S/M	L/XL	XXL
RIGHT	5015800110	5015800111	5015800112
LEFT	5015800100	5015800101	5015800102

IMPACT TESTED & CE CERTIFIED

# ROOST TEE

Fits snug direct on the body

Cool grey color will not show through the jersey

Non aggressive over lock seams

Front, rear and side panel stretch for ultimate fit

Long cut to comfortably tuck into pants, does not bunch up

Hand wash, hang to dry



ROOST TEE

SIZE	JR	S/M	L/XL	XXL
GREY	5000304200	5000304201	5000304202	5000304203



**NEW 2015**



# CHEST PROTECTOR 4.5 HYDRA

Hydration pack 3L, Leatt Flat CleanTech bladder & 10L Backpack with side pockets

Back protector 3DF CE EN1621-2 Level 2

Chest protector for impact CE EN1621-3 Level 2

Integration with or with out a Leatt® neck brace

Removable neck brace plate for under or over shirt fit

Optimal AirLine back ventilation

Articulating rib panels for various body sizes

Side and shoulder adjustment

Waterproof removable cell phone pouch

Left and right hydration tube channeling

CHEST PROTECTOR 4.5 HYDRA 3L

SIZE	BLACK
ADULT	5014210151

IMPACT TESTED & CE CERTIFIED





# CARGO 3.0 GPX OFF ROAD

- 10L Back protection and 3L hydration in one!
- Leatt® Flat CleanTech bladder (New centre baffle and self seal lower valve)
- Back protector 3DF CE EN1621-2 Level 2
- New Leatt® chest harness for rock solid fit
- Chest pockets
- Go-Pro holder left and right shoulder strap
- Heat resistant encapsulated bladder pocket.
- Waterproof removable cell phone pouch
- Integration with or without a Leatt® neck brace
- Optimal AirLine back ventilation
- Articulating rib panels for various body sizes
- Sealed tool compartment
- Water bottle holders
- Left and right hydration tube channeling
- Mission Pack Compatible
- Bottom Jacket storage straps
- One adult size fits S-XXL



CARGO 3.0 GPX OFF ROAD 3L

SIZE	3L
ADULT	7015100132



# A4 HYDRATION

- 3.0L/100oz, Reusable Hydrapak Elite bladder & Backpack 9L volume
- Perfect fit with or with out a Leatt® neck brace
- Adjustable body harness for optimal body fit & sizing
- Multiple pockets for snacks & valuables
- Hoses and mouth piece in high grade silicone
- Aluminum foil back cover keeps your liquid cooler
- Hands free kit available as accessory
- One adult size fits S-XXL



A4 HYDRATION 3L

SIZE	3L
ADULT	7015100122



# F4 HYDRATION

- 3.0L/100oz, Reusable Hydrapak Elite bladder & Backpack 9L volume
- Perfect fit with or with out a Leatt® neck brace
- Helmet carry system (both full-face and open helmets)
- Adjustable Body harness for optimal body fit & sizing
- Mesh ventilated shoulder straps
- Airstrips back panel to ensure free air circulation
- Aluminum foil back cover keeps your liquid cooler
- Multiple pockets for snacks & valuables
- One adult size fits S-XXL



F4 HYDRATION 3L

SIZE	3L
ADULT	7015100130



# H4 HYDRATION

- Holds 85 ounces (2.5 liters) of fluid
- 5 Liter total cargo space in three separate zippered pockets
- Perfect fit with or with out a Leatt® neck brace
- Bladders, hoses, bite valve and connectors are BPA free
- Aluminized insulation helps keep fluid cool
- Exclusive, drip-free, bite valve with cover
- Disposable bladders help insure proper hygiene
- Quick release connection allows easy on and off
- Designed to be worn over the outside of the entire rider's protective equipment
- One adult size fits S-XXL

Dirt Bike magazine says: "The Leatt H4 is the perfect performance design for the off-roader. Rates an A."



H4 HYDRATION 2.5L

SIZE	2.5L
ADULT	700034013



# A3 HYDRATION

2.0L/70oz, Reusable Hydrapak Elite bladder  
 Perfect fit with or without Leatt® neck brace  
 Body harness for optimal body fit & sizing  
 Clip on – clip off removable pocket for tools, keys, wallet, supplements etc  
 Water resistant cell phone pocket for valuables  
 Hoses and mouth piece in high grade silicone  
 Aluminum foil back cover keeps your liquid cooler  
 Hands free kit available as accessory  
 One adult size fits S-XXL



A3 HYDRATION 2L

SIZE	2L
ADULT	7015100121

# A2 HYDRATION

3.0L/100oz, Reusable Hydrapak Elite bladder  
 Perfect fit with or with out a Leatt® neck brace  
 Body harness for integrated body fit  
 Adjustable body harness for optimal sizing  
 Hoses and mouth piece in high grade silicone  
 Aluminium foil back cover keeps your liquids cooler  
 Hands free model available  
 One adult size fits S-XXL



A2 HYDRATION 3L

SIZE	3L
ADULT	7015100120

# H3 HYDRATION

1.2 Liter (40 ounces) disposable medical grade bladder  
 Body harness for integrated body fit  
 Integrated tool bag compartment is detachable  
 90° degree bite valve has removable cap for dirt free drinking  
 Velcro® adjusting body harness for optimal sizing  
 Hoses and mouth piece in high grade silicone  
 Bladder, hose, cap and bite valve are BPA free  
 Aluminum foil encapsulated bladder keeps your liquid cooler  
 Hands free drinking kit for your helmet as optional  
 Weight 520 grams  
 One adults size fits S-XXL



H3 HYDRATION 1.2L

SIZE	1.2L
ADULT	7000300110



# H2 & H2 HHF HYDRATION

2.5L replaceable medical grade bladder  
 Body harness for integrated body fit  
 Extra pocket for energy bars, phone, keys, etc.  
 Velcro adjusting body harness for optimal sizing  
 Hoses and mouth piece in high grade silicone  
 Aluminum foil encapsulated bladder keeps your liquid cooler  
 Helmet hands free model (HHF) places bit valve right inside the helmet  
 Quick release connection allows easy on and off (HHF only)



H2 & H2 HHF HYDRATION 2.5L

SIZE	H2 (2.5L)	H2 HHF (2.5L)
ADULT	7015100110	7015100111



# HYDRATION BRACEPACKS

SPX : all 4.5/5.5/6.5 neck braces

SP 1: all Pro/Pro Lite/Club/Race/Comp/Adventure/Trail/Ride braces

Holds 18 ounces (0.5 liters)

Disposable bladders helps insure proper hygiene

Integrates perfectly with Leatt® chest/body protectors

Aluminized insulation helps keep fluid cool

Disposable bladders helps insure proper hygiene

Places bite valve right inside the helmet

Quick release connection allows easy on and off

Optional quick refill bottle sold separately



## HYDRATION BRACEPACKS

MODEL	SPX	SP1
0.5L	7015100100	700034001



SPX



SP1



# HYDRATION SPARES



ADAPTOR CAPS



COUPLING SET



REFILL BLADDER PACK



BITE VALVES



REFILL BOTTLE

## ADAPTOR CAPS

MODEL	PART #
2.5 L	0700034031
0.5 L - 1.2L	0700034030

## COUPLING SET

MODEL	PART #
QUICK TUBE	0700034060

## BITE VALVES

MODEL	PART #
STRAIGHT	0700034050
ELBOW	0700034055

## FLAT CLEANTECH BLADDER

MODEL	PART #
2L	7014210125
3L	7014210120

## REFILL BLADDER PACK

MODEL	PART #
2.5L 5 PACK	0700034021
1.2L 5 PACK	7000300120
0.5L 5 PACK	0700034020

## DRINK TUBE

MODEL	PART #
SILICONE	0700034035

## HELMET HANDS FREE KIT

MODEL	PART #
BLACK/YELLOW	0700034040

## REFILL BOTTLE

MODEL	PART #
QUICK REFILL	0700034025

# H1 HYDRATION

Ultra light hydration kit

0,5L (18 ounce) disposable medical grade bladder for up to 1h riding

Hands free drinking system

Adjustable body harness for optimal body fit

Hoses and mouth piece in high grade silicone

Bladder, hose, connectors and bite valve are BPA free

Aluminum foil encapsulated bladder keeps your liquid cooler

Can be used with or without a neck brace

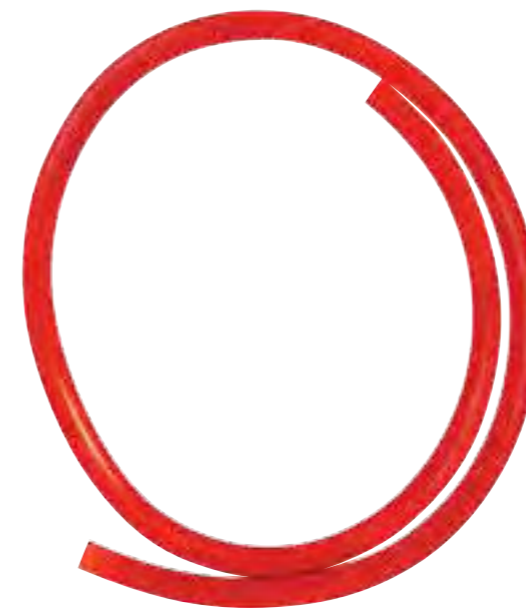
Weight 165grams

One adults size fits S-XXL



## H1 HYDRATION HARNESS

SIZE	0.5L
ADULT	7000300100



DRINK TUBE



HELMET HANDS FREE KIT





# COMFORT & PROTECTION



All Leatt Gloves uses Armourgel to provide protection at a very low weight. Increasing comfortability without compromising protection



Distal Interphalangeal Joint (DIP) Protectors.



Proximal Interphalangeal Joint (PIP) protector



Metacarpophalangeal Joint (MCP) protector.



Distal Phalanges Thumb Roost protector.



Carpal and Ulna Protector

# INSIDER INFORMATION



Leatt® Gloves features 700 nanometer ultra fine polyester Nanofiber 1 piece palms. Giving you touch screen function, increased grip in the wet or dry and extreme breathability.



With the addition of 100% Aramid fiber abrasion protection on the lower palm, designed to exceed CE's abrasion level 1 standard.



# AIRFLEX LITE GLOVE

**NEW 2015**

Fully vented mesh racing glove

Snug stretch fit with seamless palm

Leatt® Nanofiber palm material:

- Nanofiber 7.500 times thinner than hair
- Flex and stretch
- Extremely thin and soft yet durable
- Premium dry and wet grip

Injected Armourgel impact protection:

- Knuckles, fingers & thumb

Aramid lower palm abrasion protection

Throttle reinforcement

Airprene stretch cuff

Multi-ply Nylon thread stitching



BLACK



WHITE



BLACK & WHITE



ORANGE & WHITE



GRAPHITE & LIME



YELLOW & RED

## AIRFLEX LITE GLOVE

SIZE	BLACK	WHITE	BLK/WHT	ORG/WHT	GRAH/LIME	YLW/RED
XS/6	6015100100	6015100110	6015100120	6015100130	6015100140	6015100150
S/7	6015100101	6015100111	6015100121	6015100131	6015100141	6015100151
M/8	6015100102	6015100112	6015100122	6015100132	6015100142	6015100152
L/9	6015100103	6015100113	6015100123	6015100133	6015100143	6015100153
XL/10	6015100104	6015100114	6015100124	6015100134	6015100144	6015100154
XXL/11	6015100105	6015100115	6015100125	6015100135	6015100145	6015100155



## AIRFLEX WIND GLOVE

SIZE	BLACK	BLK/WHT	BLK/YLW	BLK/ORG
XS/6	6015100160	6015100170	6015100180	6015100190
S/7	6015100161	6015100171	6015100181	6015100191
M/8	6015100162	6015100172	6015100182	6015100192
L/9	6015100163	6015100173	6015100183	6015100193
XL/10	6015100164	6015100174	6015100184	6015100194
XXL/11	6015100165	6015100175	6015100185	6015100195



BLACK



BLACK & WHITE



BLACK & YELLOW



BLACK & ORANGE

**NEW 2015**

# AIRFLEX WIND GLOVE

Wind proof and breathable racing glove

Snug stretch fit with seamless palm

Leatt® Nanofiber palm material:

- Nanofibers 7.500 times thinner than hair
- Flex and stretch
- Extremely thin and soft yet durable
- Premium dry and wet grip

Injected Armourgel impact protection:

- Knuckles, fingers & thumb

Aramid lower palm abrasion protection

Throttle reinforcement

Neoprene stretch cuff

Multi-ply Nylon thread stitching



# COOLIT

AS YOUR CORE TEMPERATURE RISES, PHYSICAL AND MENTAL PERFORMANCE SUFFERS AND YOU'RE NOT ABLE TO PERFORM AT YOUR PEAK. THIS RISING CORE TEMPERATURE IS ALSO DANGEROUS AND CAN RESULT IN HEAT STROKE THAT MAY BE FATAL IN EXTREME CIRCUMSTANCES. LEATT'S COOLING RANGE AIMS TO HELP WITH THIS NATURAL PROBLEM BY AIDING YOUR CORE TEMPERATURE TO STAY AT NORMAL LEVELS.

## COOLING DOWN

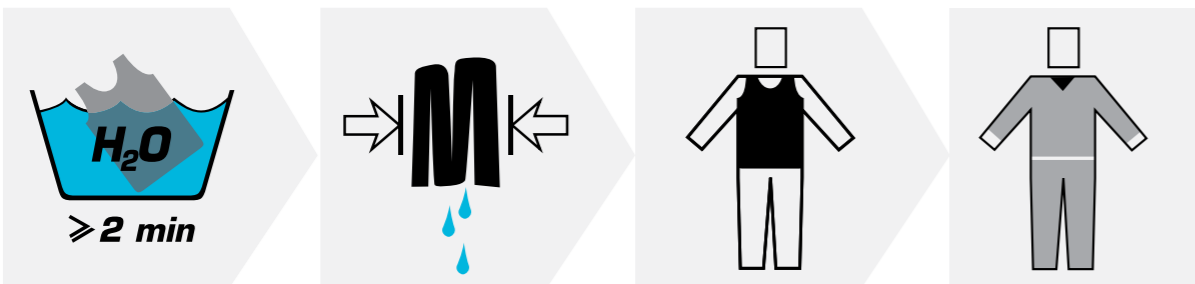
The Leatt® Cooling products rely on Hyperkewl™, a technologically advanced material invented by Techniche International. Worn next to the skin, Hyperkewl™ initially keeps you cool with its absorbed water and continues to keep you cool later via the evaporation process. Light, cool and effective.



LEATT® PRODUCTS THAT USE THE HYPERKEWL TECHNOLOGY CAN BE IDENTIFIED BY THIS LOGO

## THE COOLIT PROCESS

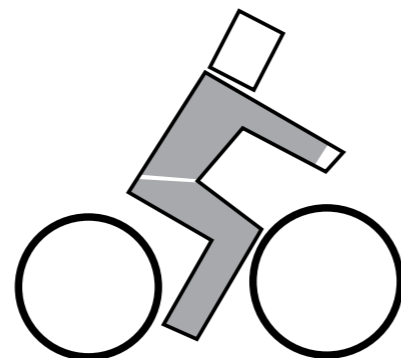
The Coolit products work pretty easy. Submerge your Coolit product in water for about 2 minutes, squeeze out excess water, put it on and go ride. The coolit products are comfortably worn under your riding gear.



## RIDE LIKE THE BREEZE

With the Hyperkewl technology activated next to your skin and the air flowing through as you ride, you can feel up to 8°-11°C cooler. This will help your core to keep at a normal temperature and help you focus on your ride.

FEEL UP TO  
**15°-20° F**  
**8°-11° C**  
COOLER



# PRE-COOLING

THE LEATT® PRE-COOLING PRODUCTS ARE DESIGNED TO HELP KEEP YOUR BODY COOL, EVEN REDUCE YOUR STANDING BODY TEMPERATURE, BEFORE YOU COMPETE AND COOL YOU DOWN QUICKER AFTER THE EVENT. ON HOT DAYS AN ATHLETE'S BODY WILL HAVE AN INCREASED BODY TEMPERATURE BEFORE THE COMPETITION EVEN BEGINS. THIS MAKES THE ATHLETE PRONE TO EARLY HEAT EXHAUSTION, LOSS OF MUSCLE PERFORMANCE, LOSS OF MENTAL CONCENTRATION AND CAN BE, IN EXTREME CASES, LIFE THREATENING.

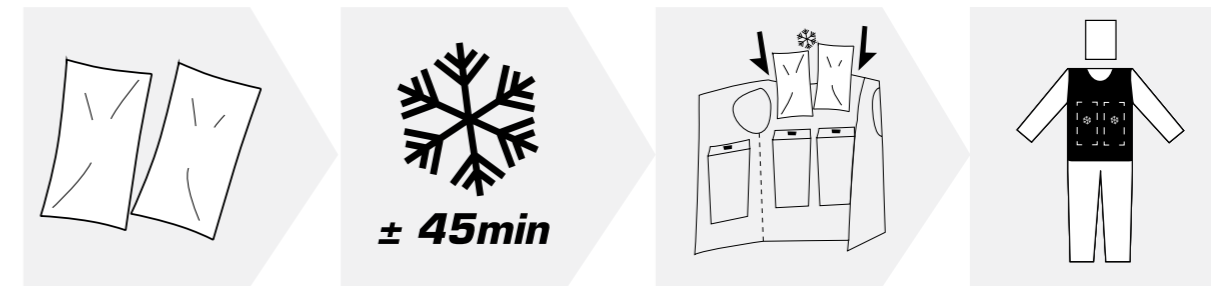
## THE PRECOOL WAY

The Cool Pax™ inserts maintain a comfortable temperature of 14°C (58°F) for up to 3 hours. Because they "freeze" at this high temperature you can activate them in a freezer, refrigerator or even ice water, in just 45 minutes. Wearing the Pre-Cool vest before an event keeps you as fresh as possible up until you are ready to compete. Do not wear the vest during a competition. Then put the vest back on after the event, or between events, for quicker recovery.



## THE PRECOOL PROCESS

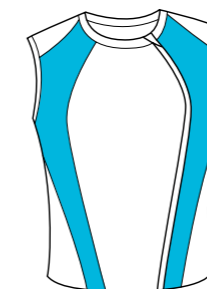
Precooling is as easy as cooling. Take your Cool Pax™ and put them in the freezer until they are nice and cold. Remove them from the freezer and insert them into your precool product. The only thing left to do is suit up and cool down.



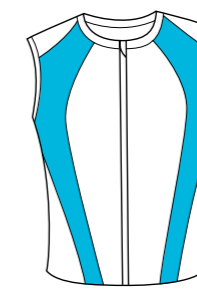
# DESIGNED COMFORT



Coolit Tee



Coolit Vest



Precool Vest

At Leatt® it is not just about protection but comfort as well. The Coolit and Precool products are both designed to be comfortable. Stretchable moisture wicking material is specially placed in areas to let the garment fit around your natural body shape for maximum comfort.



# PRECOOL VEST

For Pre-Cooling athletes before, between and after events, not for use while competing

Lowers body temperature

Increase muscle performance/endurance

Cool Pax™ cooling inserts freeze at 58°F (or 14°C), stay cold for up to 3 hours

Cool Pax™ unique fluid is 30% lighter than water/gel based packs

Fits directly on body with no risk of "ice burn"

Vest, with packs removed, doubles as a cooling vest that can be worn in competition

Flat, non-irritating, over lock seams

Front, rear and side panels made of stretchable wicking fabric for comfort and additional cooling

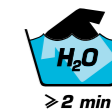
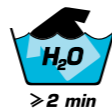


Cool Pax™



## PRECOOL

SIZE	PRICE	VEST
JR	\$ 229	5000304100
S/M	\$ 349	5000304101
L/XL	\$ 349	5000304102
XXL	\$ 349	5000304103



## COOLIT

SIZE	XXS/JR	XS	S	M	L	XL	2XL	3XL
TEE	0500030369	0500030370	0500030371	0500030372	0500030373	0500030374	0500030375	0500030376
VEST	0500030389	0500030390	0500030391	0500030392	0500030393	0500030394	0500030395	0500030396



VEST

TEE

# COOLIT VEST & TEE

Combination of fabrics creates a water management system that helps to keep you cool

Evaporative cooling products are worn by athletes around the world to improve performance

Soak for a minimum of 2 minutes in cool water

After soaking the coolit, throw it in the fridge to get an initial deep chill before you hit the circuit

Stretch mesh sides allow for best, most comfortable fit

Easy to wear pullover design needs to be worn next to the skin, under all other garments and protective gear

Hyperkewl is made from a multi fiber polymer embedded fabric layered between





# W-E-C JACKETS

- 100% polyester water resistant outer shell with mesh nylon inner liner
- 5 cargo pockets & 1 waterproof chest pocket
- Zip off arms add versatility
- Inner pocket is hydration bladder ready
- Rubber arm guards helps protect jacket from abuse from trees, bushes and rocks
- Ventilated to help keep you cool
- Velcro adjusters at wrists, waist and hips allow better fitment and controlled ventilation
- Window pocket on throttle side sleeve
- Rubberized front opening for ear bud cables
- Drop tail design helps keep the elements out of your pants



W.E.C WHITE



W.E.C RED



W.E.C BLACK



W.E.C ORANGE

## W.E.C. JACKET | \$ 229

SIZE	S	M	L	XL	XXL	XXXL
BLACK/BLACK/WHITE	5014200001	5014200002	5014200003	5014200004	5014200005	5014200006
WHITE/BLACK/GREY	5014200101	5014200102	5014200103	5014200104	5014200105	5014200106
RED/BLACK/GREY	5014200301	5014200302	5014200303	5014200304	5014200305	5014200306
ORANGE/BLACK/WHITE	5014200401	5014200402	5014200403	5014200404	5014200405	5014200406



## CASUALS | \$ 29

SIZE	S	M	L	XL	XXL
CHECKERED	0500030125	0500030126	0500030127	0500030128	0500030129
RACE STRIPE	0500030145	0500030146	0500030147	0500030148	0500030149
RACE READY	0500030135	0500030136	0500030137	0500030138	0500030139



CHECKERED



RACE STRIPE



RACE READY



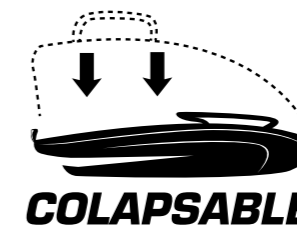
- Safer design helps keep hard tools away from your vital body parts
- Easy access multi tool main compartment
- Two, easy access side pockets
- Water resistant material
- Fits waist sizes from 28" to 44"

## TOOL BAG | \$ 69

MODEL	PART #
BLACK	7014100001



ACCOMMODATES ALL LEATT-BRACES®



COLAPSABLE

Made by Leatt® for your Leatt®, your brace bag is the best way to store your Leatt® neck brace, protecting your brace so it can help protect you. The Leatt® Brace Bag is easy to use, collapsible for easy storage and even has a bit of extra space for your personal effects. It really is the best bag for your Leatt® neck brace.

## BRACE BAG | \$ 59

MODEL	PART #
BLACK	7000300001



- Designed to fit with GPX/DBX Leatt® neck braces
- Waterproof and breathable
- Easy fitment
- Two sizes: Small (S/M) or Medium (L/XL)

## NECK BRACE WEATHER COLLAR | \$ 39

MODEL	PART #
BLACK	4300030271



## ONLINE SPARE PARTS

Check out the Leatt® website at [www.leatt.com](http://www.leatt.com) and stay in touch with everything happening at Leatt®. Become a fan on facebook and follow us on twitter to ensure you stay up to date with new product news and the achievements of our riders. The website features streamlined navigation with in-depth product descriptions and images, as well as information about Leatt®'s facilities and the technology behind our products.



An easy-to-use menu structure ensures you can quickly find what you're looking for, from braces to protection to accessories to casual wear and more. The site also features detailed exploded views of braces to effortlessly find the correct spare parts for your brace. Simply select your sport, choose your brace, find the part, then order directly from us via [www.leatt.com/shop](http://www.leatt.com/shop).



JOHNNY AUBERT



MARVIN MUSQUIN

## SHOULDER BRACE SIZING

	S/M	L/XL	XXL
<b>CM</b>	76-101	101-115	115-132
<b>INCH</b>	30-40	40-45	45-52



## C-FRAME SIZING

BRACE	S/M	L/XL	XXL
<b>SIZES</b>	45 - 50 cm 17.5" - 19.5"	50 - 58 cm 19.5" - 23"	58 - 64 cm 23" - 25"

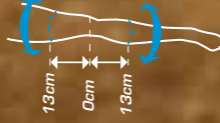
\* Measure around the mid part of upper leg



## KNEE GUARD SIZING

	JR	S/M	L/XL	XXL
<b>UPPER</b>	28 - 34 cm 11" - 13.4"	33 - 41 cm 13" - 16"	41 - 53 cm 16" - 21"	53 - 69 cm 21" - 27"
<b>LOWER</b>	20 - 26 cm 7" - 10"	25 - 33 cm 9" - 13"	33 - 44 cm 13" - 17"	44 - 51 cm 17" - 20"

LEG CIRCUMFERENCE



## ELBOW GUARD SIZING

	JR	S/M	L/XL	XXL
<b>CM</b>	19 - 23	22 - 28	28 - 35	35 - 41
<b>INCH</b>	7 - 9"	8.5 - 11"	11 - 14"	14 - 16"



## FUSION SIZING

cm/inch	54 - 58 21" - 22.5"	58 - 62 22.5" - 24"	62 - 66 24" - 25.5"	66 - 70 25.5" - 28"	70 - 74 28" - 29.5"	74 - 78 29.5" - 31"	78 - 82 31" - 32.5"	82 - 86 32.5" - 34"	86 - 90 34" - 35.5"	90 - 94 35.5" - 37"	94 - 98 37" - 38.5"	98 - 102 38.5" - 40"	102 - 106 40" - 41.5"	106 - 110 41.5" - 43"	110 - 114 43" - 45"	114 - 118 45" - 46.5"	118 - 122 46.5" - 48"	122 - 126 48" - 49.5"
<b>AVERAGE CHEST</b>	Fusion Jr S/M																	
	Fusion Jr L/XL																	
	Fusion Jr XXL																	
	Fusion S/M																	
	Fusion L/XL																	
	Fusion XXL																	

## NECK BRACES SIZING

cm/inch	66 - 70 25.5" - 28"	70 - 74 28" - 29.5"	74 - 78 29.5" - 31"	78 - 82 31" - 32.5"	82 - 86 32.5" - 34"	86 - 90 34" - 35.5"	90 - 94 35.5" - 37"	94 - 98 37" - 38.5"	98 - 102 38.5" - 40"	102 - 106 40" - 41.5"	106 - 110 41.5" - 43"	110 - 114 43" - 45"	114 - 118 45" - 46.5"	118 - 122 46.5" - 48"	122 - 126 48" - 49.5"	126 - 130 49.5" - 51"	
<b>AVERAGE CHEST</b>	DBX/GPX 4.5 S/M																
	DBX/GPX 4.5 L/XL																
	DBX/GPX 5.5 Jr																
	DBX/GPX 5.5 S/M																
	DBX/GPX 5.5 L/XL																
	DBX/GPX S/M																
	DBX/GPX L/XL																
	DBX/GPX 6.5 S/M																
	DBX/GPX 6.5 L/XL																
	STX S/M																
	STX L/XL																
	STX XXL																
	STX BR CUSTOM FIT WITH RACING EQUIPMENT																

please use:



- To determine the correct size: locate the correct brace based on your chest circumference indicated along the top line
- Chart applies to riders with average proportions. If you have a flat / barrel shaped chest you can refer to the complete sizing chart at [www.leatt.com](http://www.leatt.com).
- Chest measurement: measure just under the arms, across the fullest part of the chest, around the shoulder blades holding the tape firm and level
- If the chest measurement is on the borderline between two sizes, go to the higher size for a better fit.
- The chart is based on the fact that the brace will be worn directly on the body. If the brace will be worn with other protective gear this size change must be taken into consideration.